





A well positioned TWO bedroom SPACIOUS maisonette in the popular New House Park area of St Albans with good public transport services into the city centre. Conveniently placed for the MAINLINE station and access to the M25 and M1. There is AMPLE parking space at the front, only steps away from property.

£1,525 per month

To Let Unfurnished

12 Month tenancy

White Goods: Oven/Hob, Fridge/Freezer,
Washing Machine and Dishwasher

Parking: On Street Parking

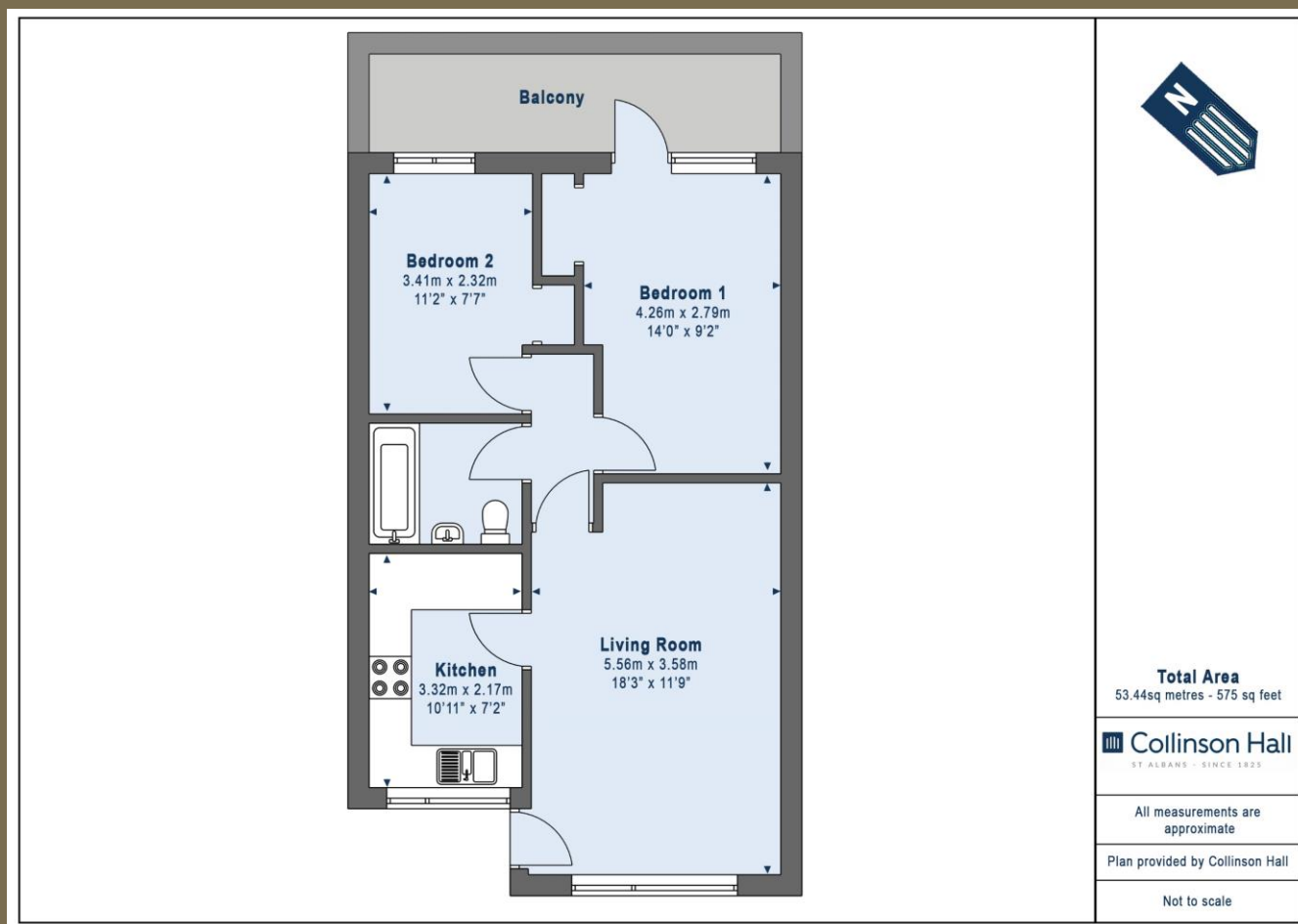
Council Tax Band: C

Available: Friday 9th June 2025

Viewings: Saturday the 26th between 2.30-
3.30pm - By appointment only







PLEASE NOTE

These particulars do not constitute an offer or contract in whole or in part. Please note that these details have been prepared for prospective purchasers as a general guide. We have endeavoured to be accurate in their preparation, but any intending purchaser should not rely on them as statements or representations of fact. In respect of the floor plans, these are for illustrative purposes only and room sizes are approximate and rounded: they are taken between internal wall surfaces and therefore may include cupboards/shelves, etc. No responsibility is taken for any error. Accordingly they should not be relied upon for carpets and furnishings. The services, systems and appliances at the property have not been tested and no guarantee as to their operability or efficiency can be given.



collinsonhall.co.uk

City Centre Office: 9-11 Victoria Street | St Albans | Hertfordshire | AL1 3UB | Telephone: 01727 843222 | Email: stalbansmail@collinsonhall.co.uk