





A spacious TWO BEDROOM ground floor apartment situated within a popular development to the east side of St Albans providing excellent access to the local shops and amenities with the mainline railway station just over a mile away. This wonderful apartment is offered for sale CHAIN FREE.

Asking Price: £270,000

The property benefits from well-proportioned accommodation and the development provides residents parking, a share of freehold and low service and maintenance costs. The accommodation comprises an entrance hall with secure entry phone, living room leading to kitchen with integrated appliances that include a fridge, freezer and washer/dryer, two good sized bedrooms and a bathroom.

Externally the property is encompassed by well-maintained communal grounds and benefits from residents parking.





Entrance Hall

Living Room 4.86m x 3.33m (15'11" x 10'11").

Kitchen 2.43m x 2.18m (8' x 7'2").

Bedroom 1 4.09m x 3.37m (13'5" x 11'1").

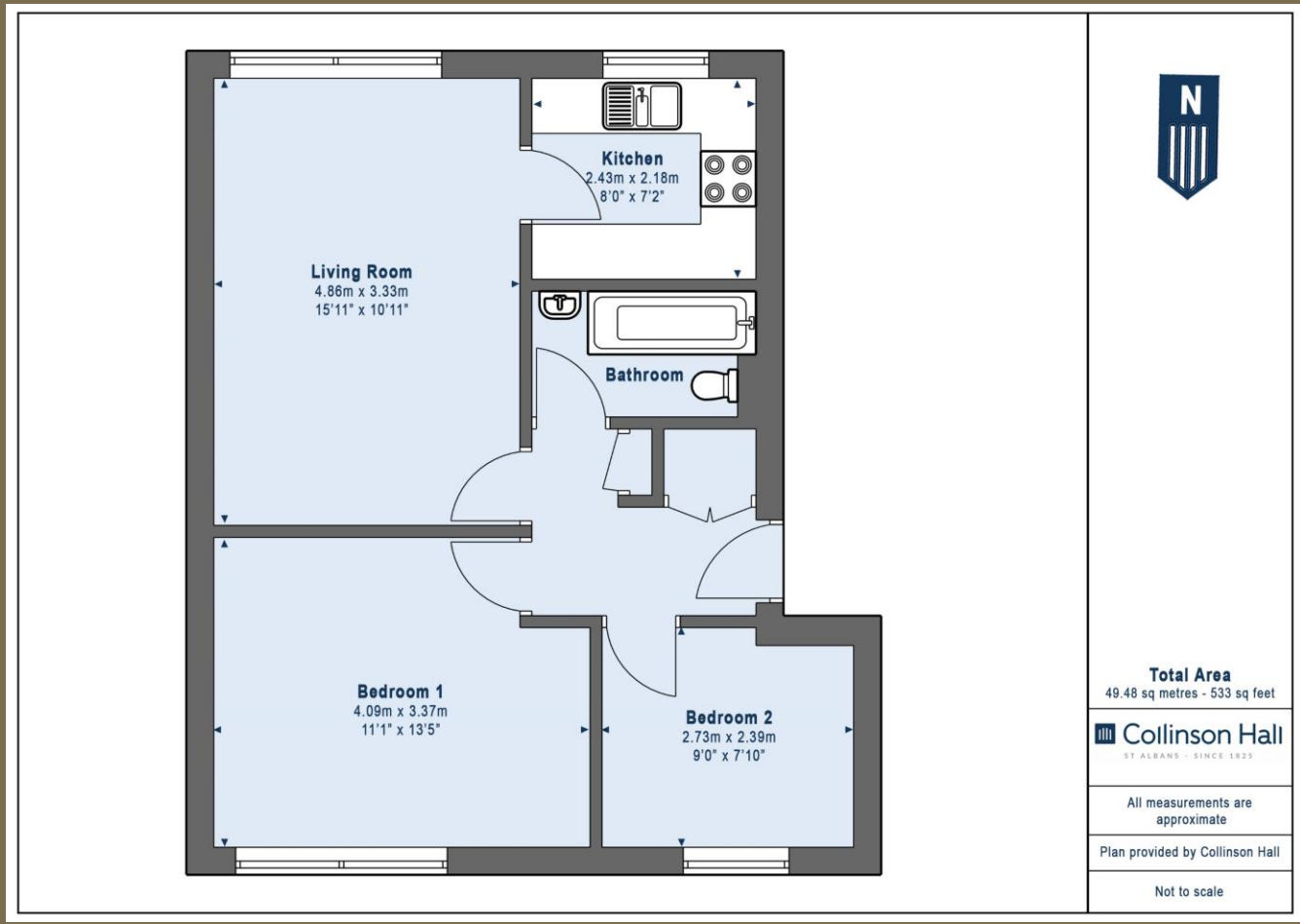
Bedroom 2 2.73m x 2.39m (8'11" x 7'10").

Bathroom

Communal Gardens

Residents Parking





PLEASE NOTE

These particulars do not constitute an offer or contract in whole or in part. Please note that these details have been prepared for prospective purchasers as a general guide. We have endeavoured to be accurate in their preparation, but any intending purchaser should not rely on them as statements or representations of fact. In respect of the floor plans, these are for illustrative purposes only and room sizes are approximate and rounded: they are taken between internal wall surfaces and therefore may include cupboards/shelves, etc. No responsibility is taken for any error. Accordingly they should not be relied upon for carpets and furnishings. The services, systems and appliances at the property have not been tested and no guarantee as to their operability or efficiency can be given.



collinsonhall.co.uk

City Centre Office: 9-11 Victoria Street | St Albans | Hertfordshire | AL1 3UB | Telephone: 01727 843222 | Email: stalbansmail@collinsonhall.co.uk

