





A beautifully presented VICTORIAN THREE DOUBLE BEDROOM end of terrace town house offering bright and spacious accommodation situated in a popular and convenient CENTRAL CUL-DE SAC LOCATION within very easy reach of the City centre, Thameslink and well regarded local schools.

Offers in the Region of: £800,000

Upon entering the home, you are welcomed into the bright entrance hall with a cloakroom, which leads us onto the spacious open plan lounge and dining area with feature fireplaces. The kitchen breakfast room has been fitted to an exceptional standard and features, not just a vast level of fittings and storage space, but also perfectly pictures the homes garden through the bi-folding doors.

On the first floor you find two generous double bedrooms and a family bathroom that includes a bath and separate enclosed shower. The second floor provides a lovely large and bright double bedroom which has ample storage space and provides picturesque views over the garden.

Externally, there is a private rear garden laid to lawn with fence borders and to the front a further wall enclosed space. This desirable road is served by permit parking for sole use of the residents, making it easy to find a space. This wonderful home is located just minutes' walk from the vibrant City Centre and all it has to offer.





Entrance Hall

Cloakroom

Living/Dining Room 8.40m x 3.68m (27'7" x 12'1").

Kitchen 4.75m x 4.26m (15'7" x 14').

Bedroom 1 4.45m x 3.38m (14'7" x 11'1").

Bedroom 2 4.12m x 2.78m (13'6" x 9'1").

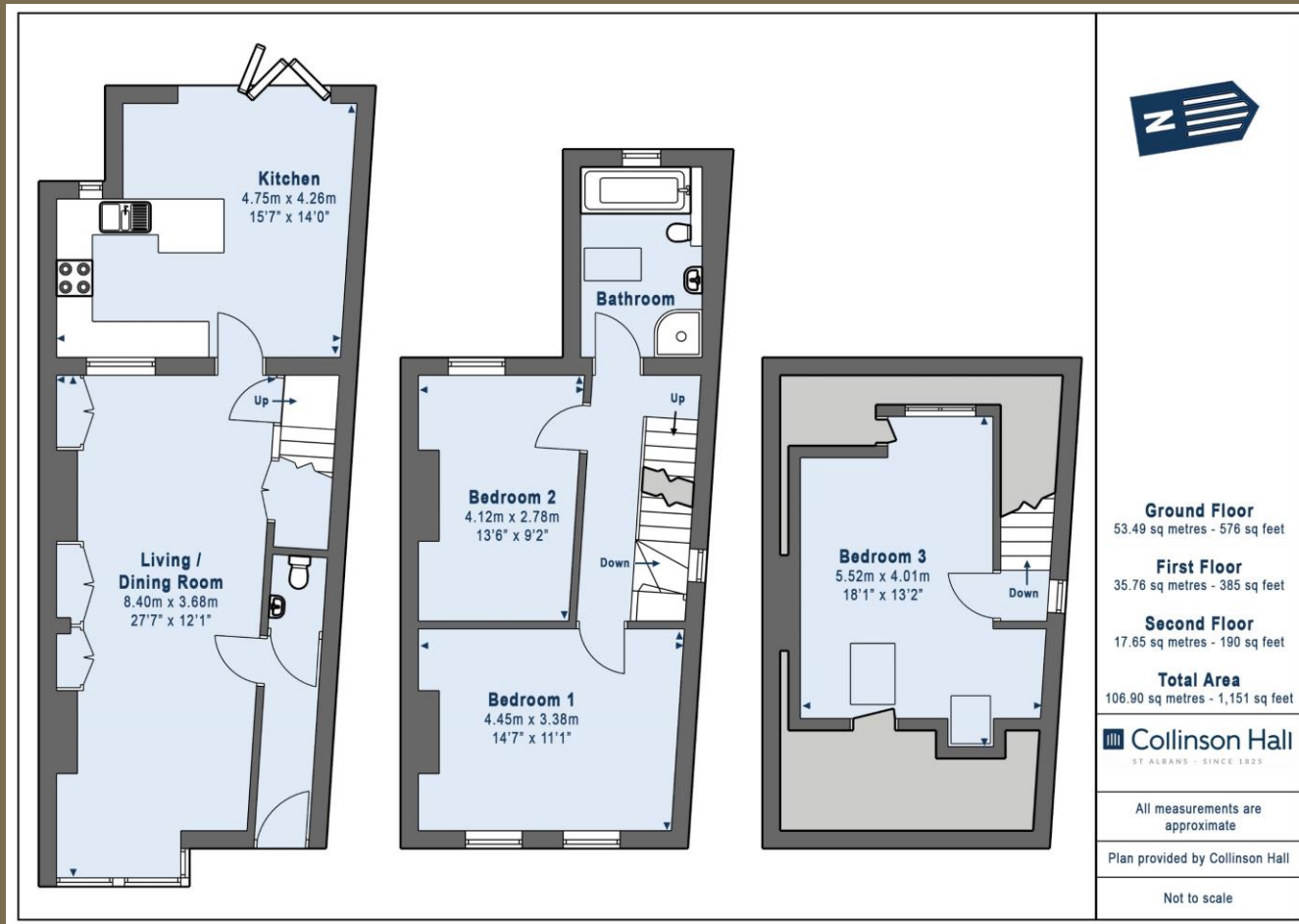
Bathroom

Bedroom 3 5.52m x 4.01m (18'1" x 13'2").

Garden







PLEASE NOTE

These particulars do not constitute an offer or contract in whole or in part. Please note that these details have been prepared for prospective purchasers as a general guide. We have endeavoured to be accurate in their preparation, but any intending purchaser should not rely on them as statements or representations of fact. In respect of the floor plans, these are for illustrative purposes only and room sizes are approximate and rounded: they are taken between internal wall surfaces and therefore may include cupboards/shelves, etc. No responsibility is taken for any error. Accordingly they should not be relied upon for carpets and furnishings. The services, systems and appliances at the property have not been tested and no guarantee as to their operability or efficiency can be given.



collinsonhall.co.uk

City Centre Office: 9-11 Victoria Street | St Albans | Hertfordshire | AL1 3UB | Telephone: 01727 843222 | Email: stalbansmail@collinsonhall.co.uk