





**Just a short stroll from the CITY CENTRE, the THAMESLINK STATION, and the LEAFY CLARENCE PARK, we find this fantastic GROUND FLOOR MAISONETTE. With COMMUNAL GARDENS and TWO DOUBLE BEDROOMS.**

**£1,250 per month**

To Let Unfurnished

White Goods: fridge, freezer, washing machine, and dishwasher included.

Council Tax band C

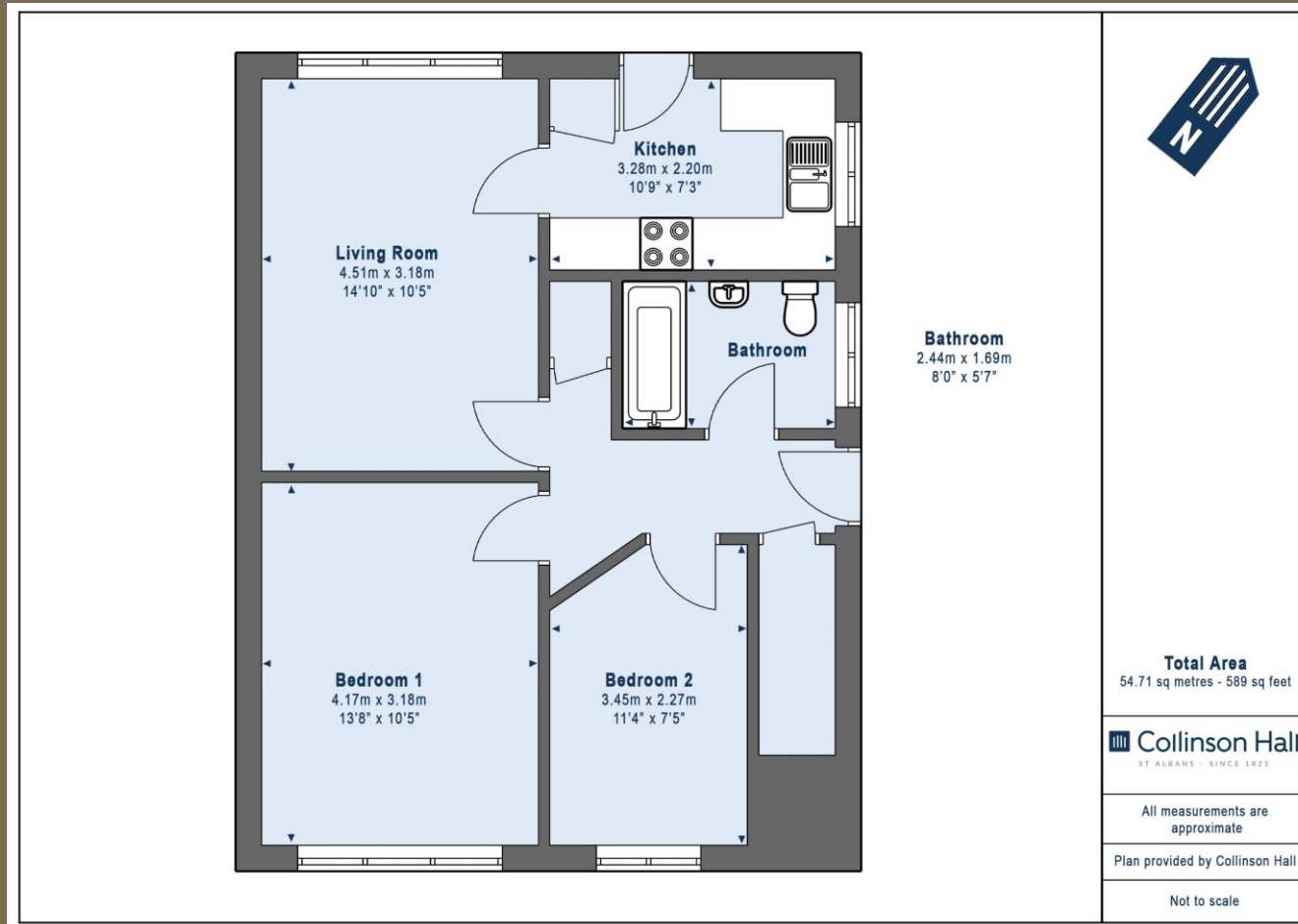
Min 12 month tenancy

We are holding an OPEN DAY on Saturday 17th September between 2-4pm.

Available 26th November







**PLEASE NOTE**

These particulars do not constitute an offer or contract in whole or in part. Please note that these details have been prepared for prospective purchasers as a general guide. We have endeavoured to be accurate in their preparation, but any intending purchaser should not rely on them as statements or representations of fact. In respect of the floor plans, these are for illustrative purposes only and room sizes are approximate and rounded: they are taken between internal wall surfaces and therefore may include cupboards/shelves, etc. No responsibility is taken for any error. Accordingly they should not be relied upon for carpets and furnishings. The services, systems and appliances at the property have not been tested and no guarantee as to their operability or efficiency can be given.



collinsonhall.co.uk

City Centre Office: 9-11 Victoria Street | St Albans | Hertfordshire | AL1 3UB | Telephone: 01727 843222 | Email: stalbansmail@collinsonhall.co.uk