





An **AMAZING MODERN TWO DOUBLE BEDROOM** ground floor apartment in this **EXCLUSIVE DEVELOPMENT** comprising of just six **LUXURY APARTMENTS**. It is in a popular location, close to **EXCELLENT AMENITIES**, and within walking distance of the **MAINLINE RAILWAY STATION**.

£1,750 per month

To Let Unfurnished

12 Month Tenancy

White goods: Oven/Hob, Fridge, Freezer, Washing Machine

Council Tax: Band C

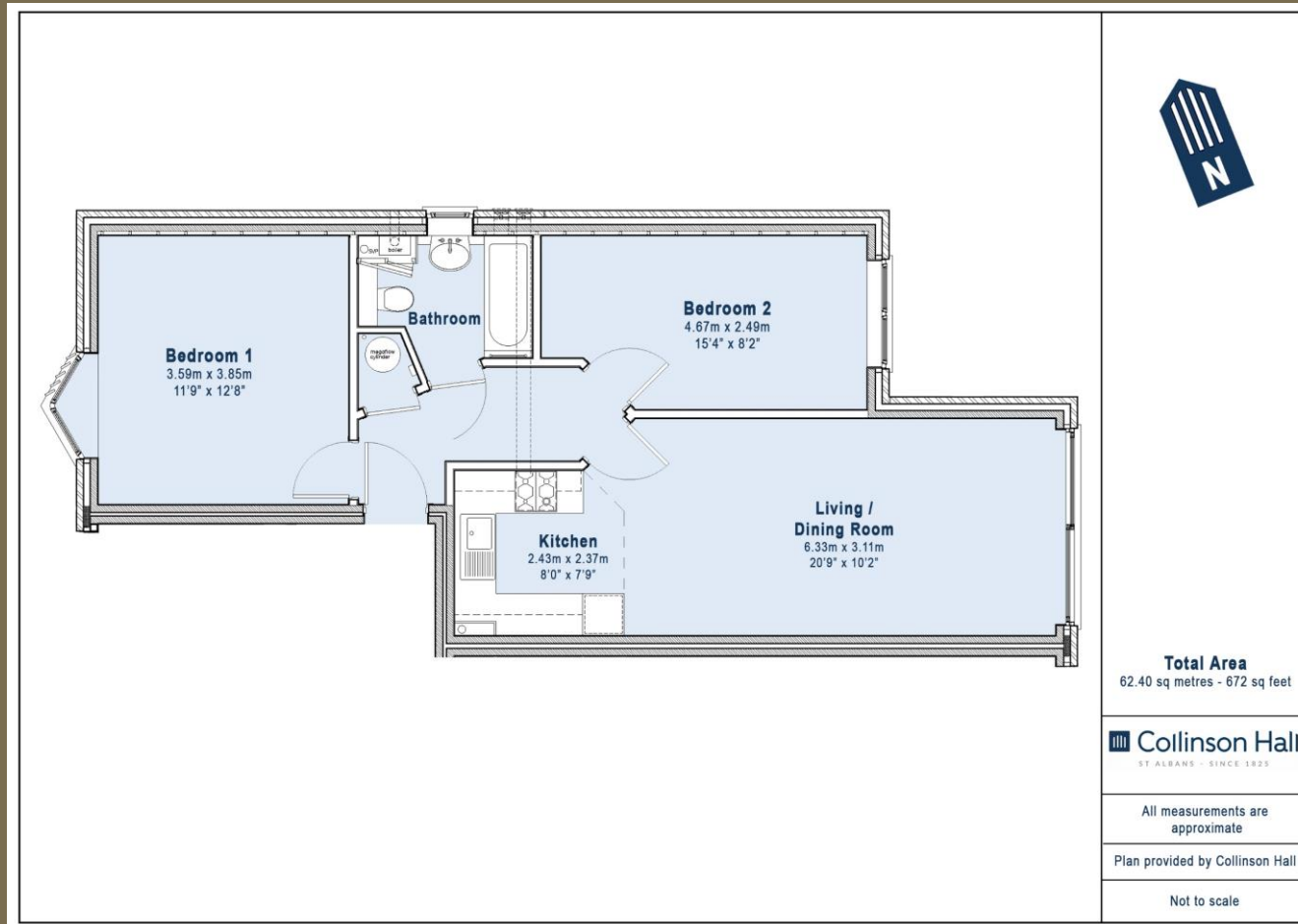
EPC Rating: B 83

Available from: 27th of April 2024

Viewing: Please call the office for an appointment to view.







PLEASE NOTE

These particulars do not constitute an offer or contract in whole or in part. Please note that these details have been prepared for prospective purchasers as a general guide. We have endeavoured to be accurate in their preparation, but any intending purchaser should not rely on them as statements or representations of fact. In respect of the floor plans, these are for illustrative purposes only and room sizes are approximate and rounded: they are taken between internal wall surfaces and therefore may include cupboards/shelves, etc. No responsibility is taken for any error. Accordingly they should not be relied upon for carpets and furnishings. The services, systems and appliances at the property have not been tested and no guarantee as to their operability or efficiency can be given.



collinsonhall.co.uk

City Centre Office: 9-11 Victoria Street | St Albans | Hertfordshire | AL1 3UB | Telephone: 01727 843222 | Email: stalbansmail@collinsonhall.co.uk