





**A SPECTACULAR APARTMENT set on the TOP FLOOR of this ELEGANT BUILDING known as Highfield Hall. Set within acres of LANDSCAPED AND METICULOUSLY TENDED GROUNDS, this charming home offers SPLENDID ACCOMMODATION APPROACHING 1000 SQUARE FEET and a wealth of CHARM AND CHARACTER.**

**Guide Price: £525,000**

This impressive top-floor apartment offers beautifully proportioned accommodation with high ceilings that create an immediate sense of light and space throughout. A welcoming entrance hall leads into a generous living and dining room, an elegant and versatile space ideal for both entertaining and everyday living. From here, doors open onto a private balcony terrace enjoying pleasant views across the landscaped communal gardens and tennis court. The principal bedroom is particularly attractive, featuring a beautiful bay window that frames uninterrupted views across the gardens and tennis court. The room is further complemented by fitted wardrobes and a well-appointed en-suite shower room. A second double bedroom provides excellent additional accommodation and is served by a stylish family bathroom, making the apartment equally suitable for guests, family, or those working from home. The property also benefits from a well-proportioned kitchen offering ample storage and preparation space. Positioned on the top floor, the apartment enjoys a peaceful setting and further benefits from allocated parking. The building itself has recently undergone extensive external refurbishment, including the installation of a new roof, enhancing both its appearance and long-term appeal.

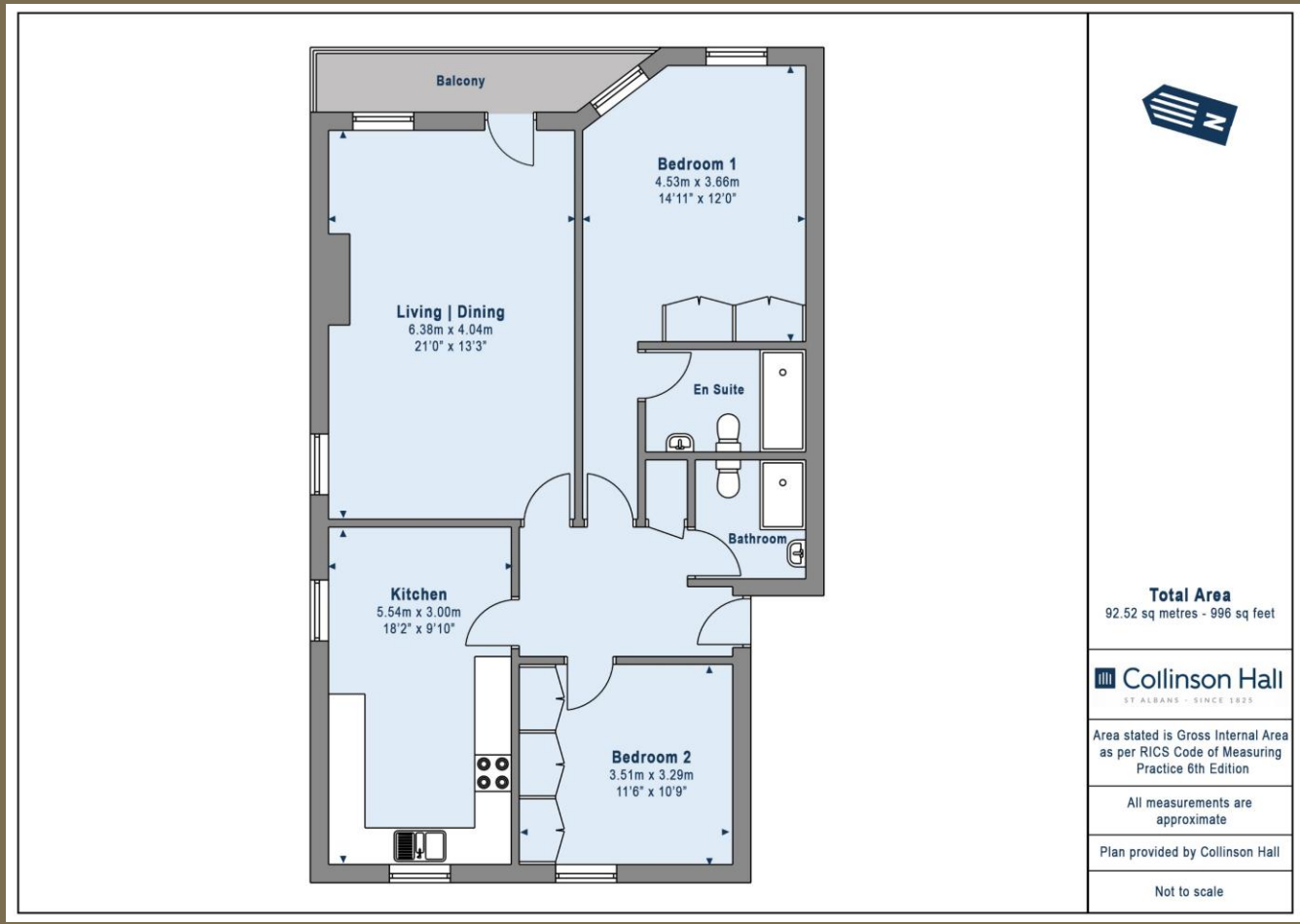


EPC Rating: TBC  
Council Tax Band: F









**PLEASE NOTE**

These particulars do not constitute an offer or contract in whole or in part. Please note that these details have been prepared for prospective purchasers as a general guide. We have endeavoured to be accurate in their preparation, but any intending purchaser should not rely on them as statements or representations of fact. In respect of the floor plans, these are for illustrative purposes only and room sizes are approximate and rounded: they are taken between internal wall surfaces and therefore may include cupboards/shelves, etc. No responsibility is taken for any error. Accordingly they should not be relied upon for carpets and furnishings. The services, systems and appliances at the property have not been tested and no guarantee as to their operability or efficiency can be given.



collinsonhall.co.uk

City Centre Office: 9-11 Victoria Street | St Albans | Hertfordshire | AL1 3UB | Telephone: 01727 843222 | Email: stalbansmail@collinsonhall.co.uk