





A beautifully presented TWO double bedroom terraced house in the popular area of Jersey Farm close to good local amenities and HIGHLY regarded schools.

The accommodation includes an entrance hallway, modern fitted kitchen with dishwasher, spacious living/dining room with patio doors onto the rear garden, two bedrooms and a tiled bathroom with a shower over the bath.

£1300 pcm

To Let unfurnished

12 month tenancy

Council tax band: D

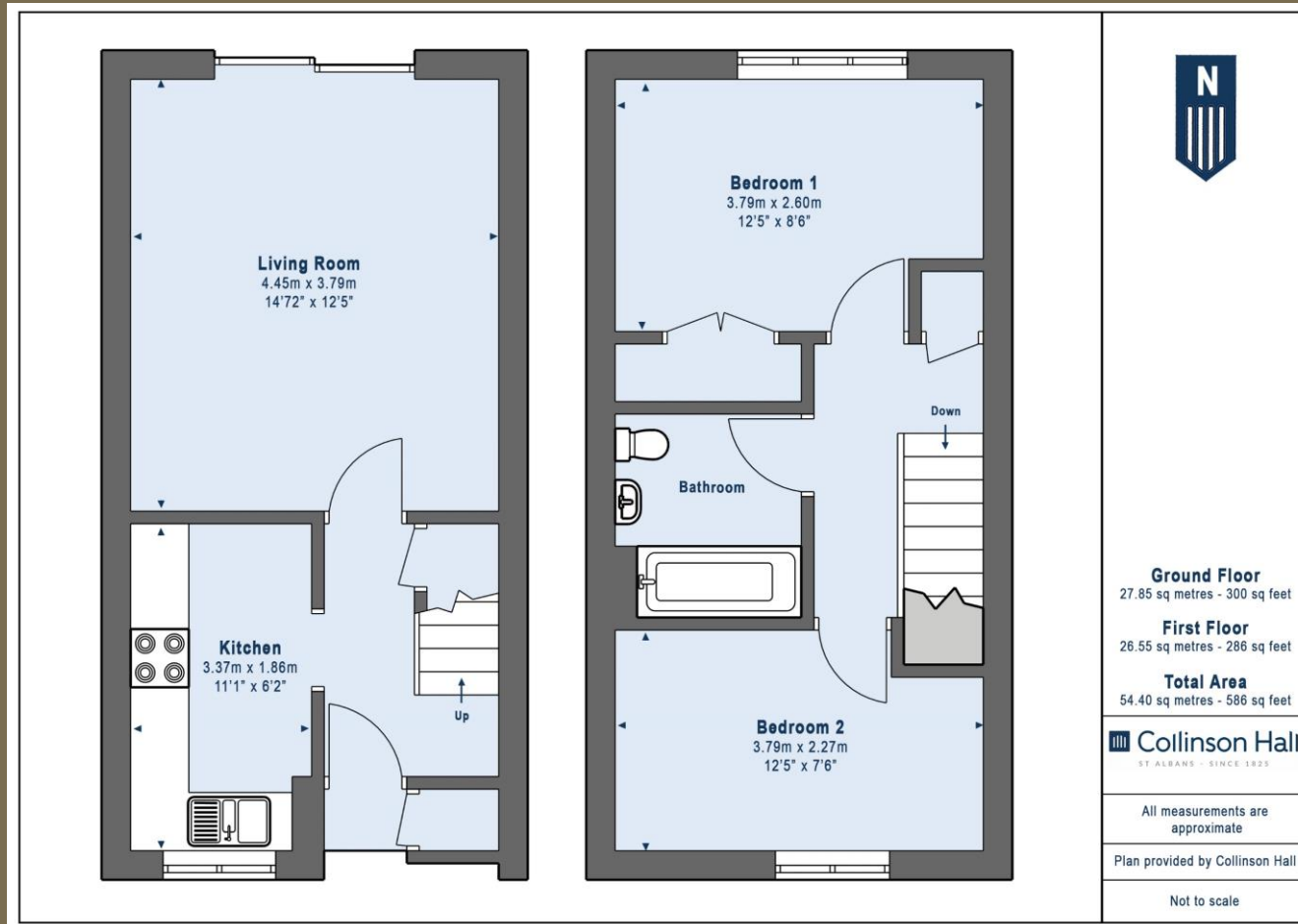
White goods: washing machine, oven, hob and fridge/freezer and dishwasher

Garage and a car parking area at the front

Available 13th November







PLEASE NOTE

These particulars do not constitute an offer or contract in whole or in part. Please note that these details have been prepared for prospective purchasers as a general guide. We have endeavoured to be accurate in their preparation, but any intending purchaser should not rely on them as statements or representations of fact. In respect of the floor plans, these are for illustrative purposes only and room sizes are approximate and rounded: they are taken between internal wall surfaces and therefore may include cupboards/shelves, etc. No responsibility is taken for any error. Accordingly they should not be relied upon for carpets and furnishings. The services, systems and appliances at the property have not been tested and no guarantee as to their operability or efficiency can be given.



collinsonhall.co.uk

City Centre Office: 9-11 Victoria Street | St Albans | Hertfordshire | AL1 3UB | Telephone: 01727 843222 | Email: stalbansmail@collinsonhall.co.uk