





A SIMPLY STUNNING and SPACIOUS FIVE-BEDROOM family home, set within the highly sought-after parish of CHISWELL GREEN. Stylishly presented in a MODERN AND CONTEMPORARY finish throughout, the property is IDEALLY LOCATED close to local amenities and excellent schooling.

Guide Price: £1,150,000

Arranged over three floors, this family home offers well-balanced living space, beginning with a spacious and welcoming entrance hall that leads to a study, cloakroom, and an impressive kitchen/diner. Double doors open into a generous lounge, seamlessly connecting back to the kitchen/diner, creating an ideal layout for modern family living and entertaining. Across the upper floors are five bedrooms in total. The first floor hosts the principal bedroom with en-suite and walk-in wardrobe, along with two further bedrooms and a stylish family bathroom. The second floor provides two additional double bedrooms, served by a further family bathroom. Externally, the property enjoys a substantial front garden set well back from the main road, laid to lawn and adding to the sense of privacy. To the rear, a secluded garden with patio terrace provides the perfect outdoor retreat, with gated access to a private driveway and garage.

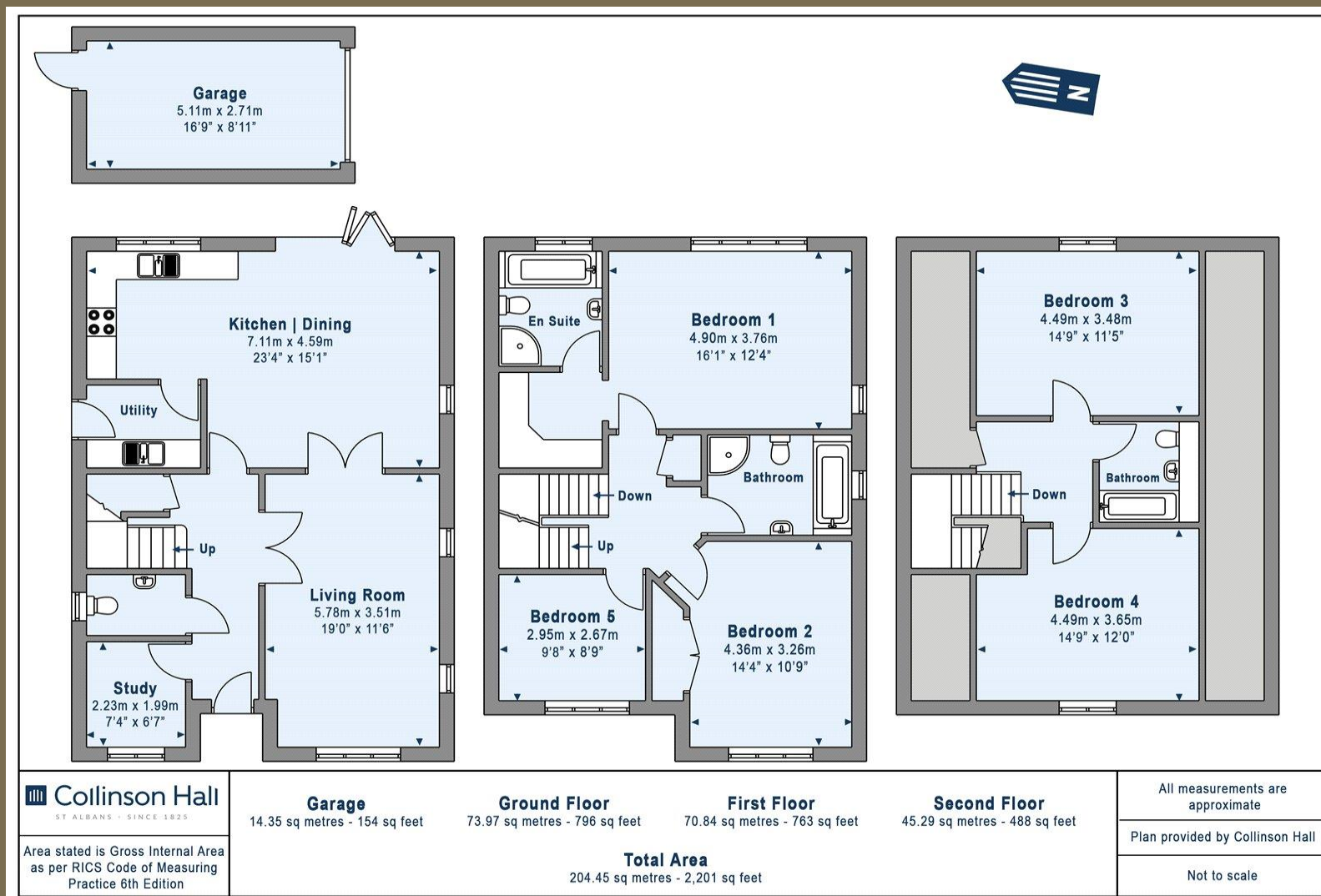
EPC Rating: TBC
Council Tax Band: G











PLEASE NOTE

These particulars do not constitute an offer or contract in whole or in part. Please note that these details have been prepared for prospective purchasers as a general guide. We have endeavoured to be accurate in their preparation, but any intending purchaser should not rely on them as statements or representations of fact. In respect of the floor plans, these are for illustrative purposes only and room sizes are approximate and rounded: they are taken between internal wall surfaces and therefore may include cupboards/shelves, etc. No responsibility is taken for any error. Accordingly they should not be relied upon for carpets and furnishings. The services, systems and appliances at the property have not been tested and no guarantee as to their operability or efficiency can be given.



collinsonhall.co.uk

City Centre Office: 9-11 Victoria Street | St Albans | Hertfordshire | AL1 3UB | Telephone: 01727 843222 | Email: stalbansmail@collinsonhall.co.uk