





A fabulous GROUND FLOOR APARTMENT forming part of a prestigious contemporary parkland development located in the heart of **ST. ALBANS CITY** with use of a **RESIDENTS GYMNASIUM**, within 0.4 miles from the **MAINLINE RAILWAY STATION** and a short stroll to the **CITY CENTRE** and its excellent shopping and leisure facilities.

£1,350 per month

To Let Unfurnished

6 Month Tenancy

White Goods: Oven/Hob, Dishwasher, Fridge/
Freezer and Washing Machine.

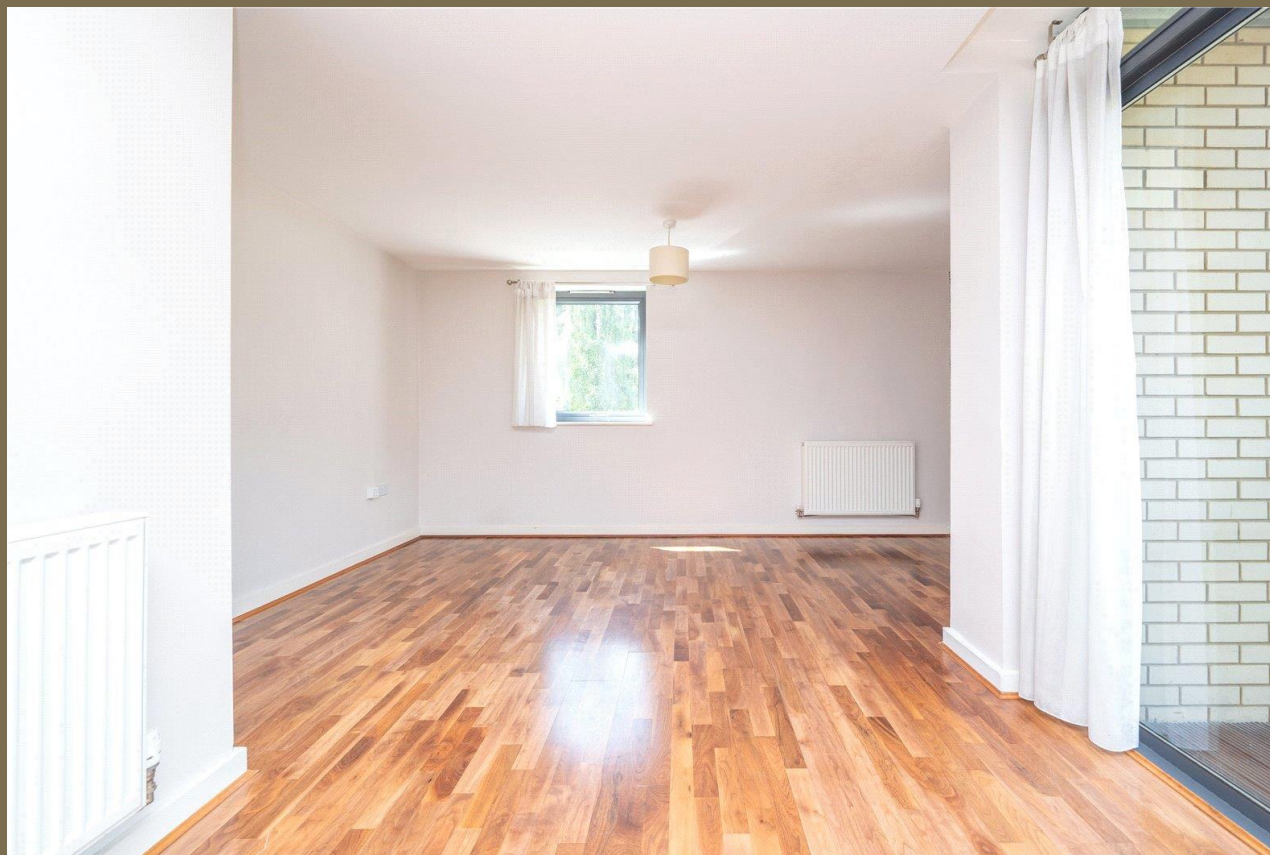
Parking: One Allocated Space

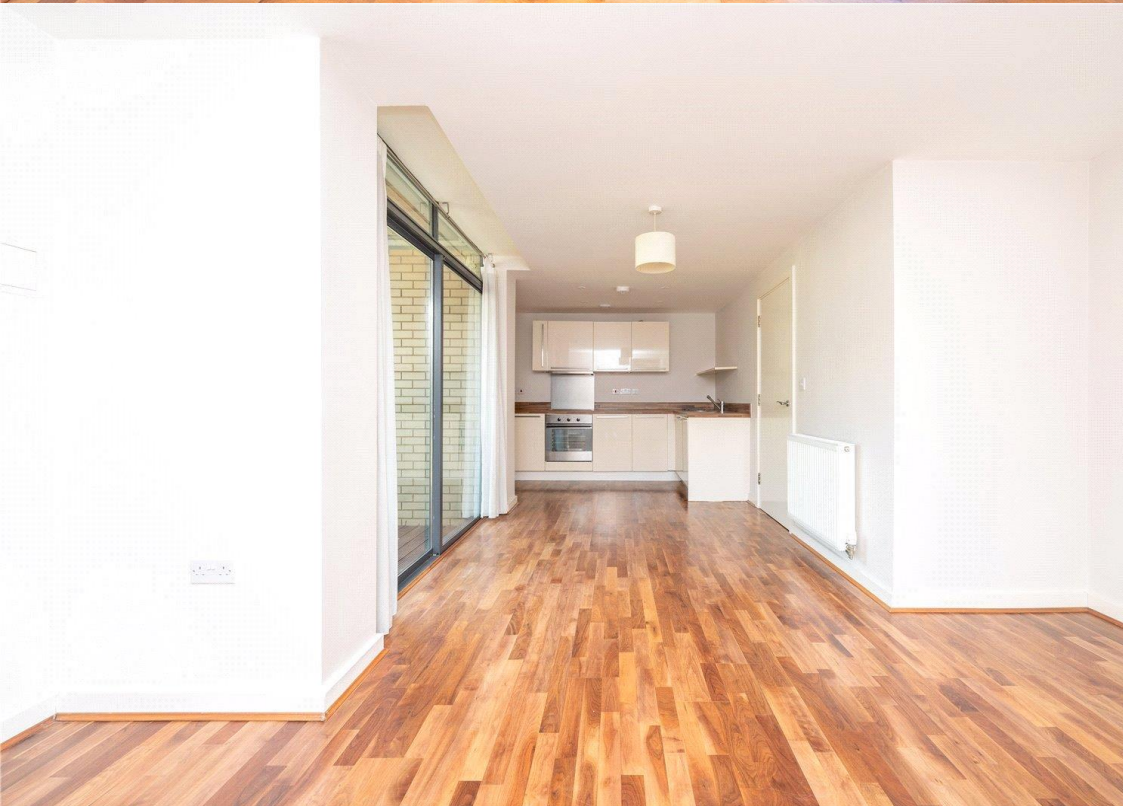
Council Tax Band: C

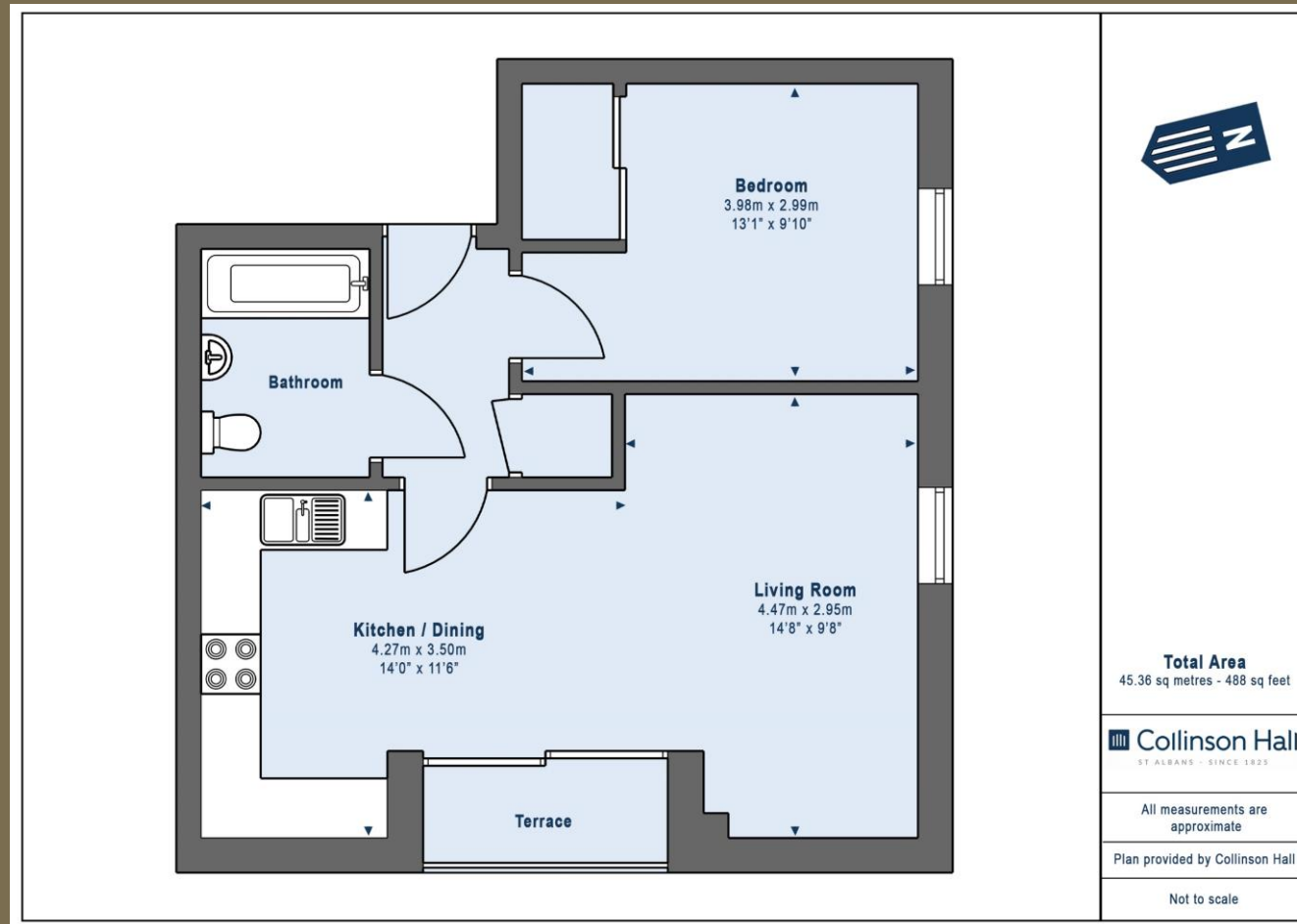
EPC Rating: C 77

Available NOW

Please call the office for an appointment.







PLEASE NOTE

These particulars do not constitute an offer or contract in whole or in part. Please note that these details have been prepared for prospective purchasers as a general guide. We have endeavoured to be accurate in their preparation, but any intending purchaser should not rely on them as statements or representations of fact. In respect of the floor plans, these are for illustrative purposes only and room sizes are approximate and rounded: they are taken between internal wall surfaces and therefore may include cupboards/shelves, etc. No responsibility is taken for any error. Accordingly they should not be relied upon for carpets and furnishings. The services, systems and appliances at the property have not been tested and no guarantee as to their operability or efficiency can be given.



collinsonhall.co.uk

City Centre Office: 9-11 Victoria Street | St Albans | Hertfordshire | AL1 3UB | Telephone: 01727 843222 | Email: stalbansmail@collinsonhall.co.uk