









Situated within the sought after village of **BRICKET WOOD** this delightful **CHALET BUNGALOW** offers spacious accommodation arranged over two floors and in total provides nearly **2000 SQUARE FEET** of living space.

**Offers Over: £700,000**

On arrival, a welcoming hallway leads through to two spacious bedrooms, a generously sized living room with adjoining conservatory, a separate dining room, a fitted kitchen, and a modern shower room. Upstairs, the home provides two further bedrooms, a cloakroom, and ample eaves storage. The rear garden is a particular highlight, beautifully stocked and thoughtfully landscaped, with a patio terrace that creates the perfect spot for relaxing or entertaining in privacy.

To the front, attractive block-paved parking offers space for several vehicles, adding both practicality and curb appeal.

EPC Rating: C 71  
Council Tax Band: G







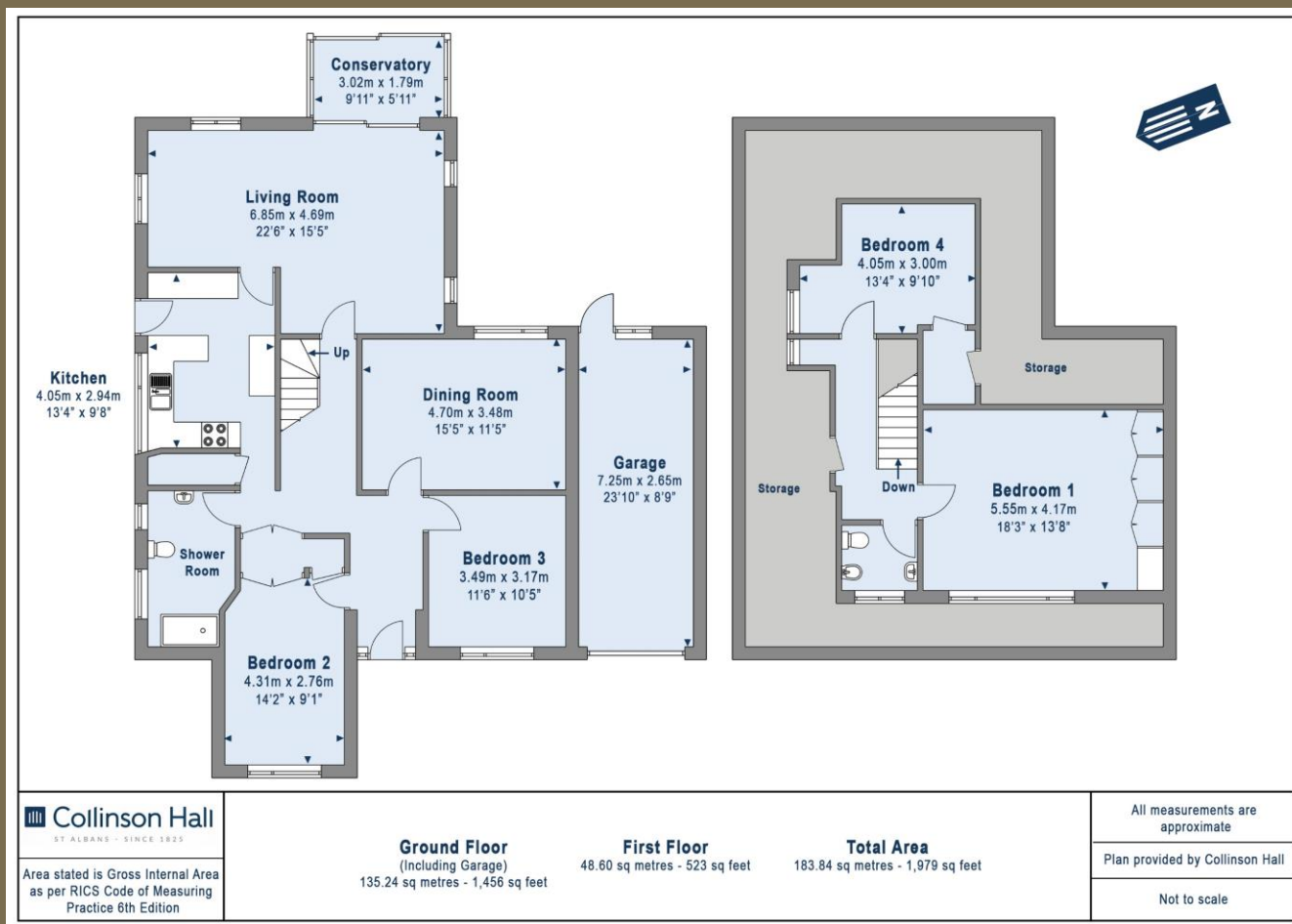












#### PLEASE NOTE

These particulars do not constitute an offer or contract in whole or in part. Please note that these details have been prepared for prospective purchasers as a general guide. We have endeavoured to be accurate in their preparation, but any intending purchaser should not rely on them as statements or representations of fact. In respect of the floor plans, these are for illustrative purposes only and room sizes are approximate and rounded: they are taken between internal wall surfaces and therefore may include cupboards/shelves, etc. No responsibility is taken for any error. Accordingly they should not be relied upon for carpets and furnishings. The services, systems and appliances at the property have not been tested and no guarantee as to their operability or efficiency can be given.



collinsonhall.co.uk

City Centre Office: 9-11 Victoria Street | St Albans | Hertfordshire | AL1 3UB | Telephone: 01727 843222 | Email: stalbansmail@collinsonhall.co.uk