





A fantastic END TERRACE TOWN HOUSE offering GENEROUS ACCOMMODATION arranged over three floors and presented in EXCELLENT CONDITION throughout. Frederick Place, Curo Park is a select development located within the VILLAGE OF PARK STREET and conveniently positioned for EASY ACCESS to major road networks and a short drive from St. Albans and Radlett, both offering a fast and regular rail service to London St. Pancras.

Guide Price: £650,000

Offering over 1,600 sq. ft. of versatile living space, this wonderful family home combines comfort and convenience. A modern fitted kitchen and cloakroom complement the spacious lounge, which opens directly onto a private, low-maintenance garden, ideal for relaxing or entertaining. Upstairs, four generous double bedrooms provide plenty of space for all the family, with two enjoying en-suite facilities, alongside a stylish family bathroom. To the front, a good-sized driveway offers parking for several vehicles, together with the benefit of a garage.

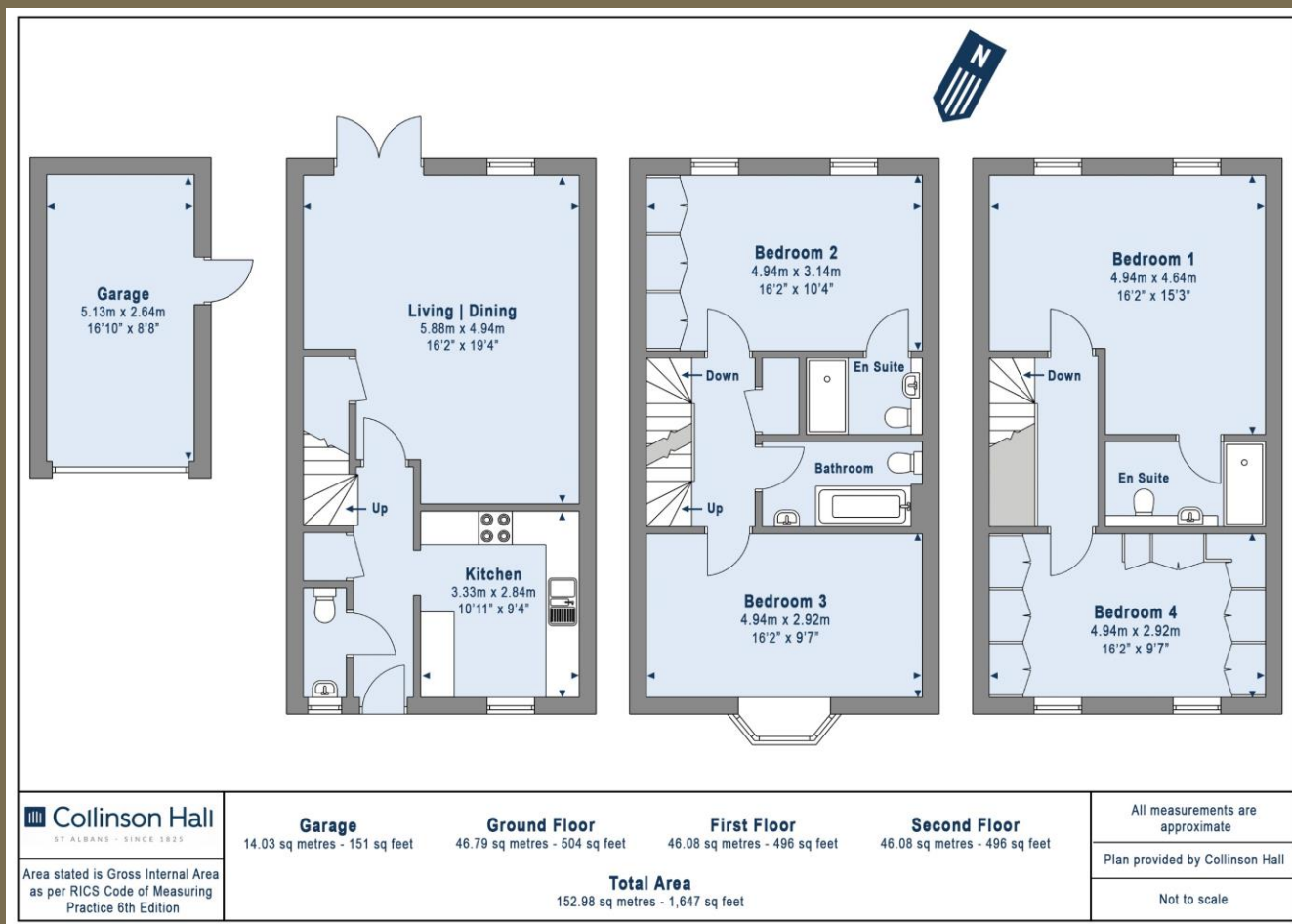
EPC Rating: C 78
Council Tax Band: F











PLEASE NOTE

These particulars do not constitute an offer or contract in whole or in part. Please note that these details have been prepared for prospective purchasers as a general guide. We have endeavoured to be accurate in their preparation, but any intending purchaser should not rely on them as statements or representations of fact. In respect of the floor plans, these are for illustrative purposes only and room sizes are approximate and rounded: they are taken between internal wall surfaces and therefore may include cupboards/shelves, etc. No responsibility is taken for any error. Accordingly they should not be relied upon for carpets and furnishings. The services, systems and appliances at the property have not been tested and no guarantee as to their operability or efficiency can be given.



collinsonhall.co.uk

City Centre Office: 9-11 Victoria Street | St Albans | Hertfordshire | AL1 3UB | Telephone: 01727 843222 | Email: stalbansmail@collinsonhall.co.uk