





A beautifully presented ONE BEDROOM apartment benefiting from LIGHT AND SPACIOUS accommodation throughout, and the advantage of RESIDENTS 'PARKING. Conveniently located within walking distance of both the ABBEY and MAINLINE RAILWAY STATIONS, beautiful VERULAMIUM PARK, the gym and swimming facilities at Westminster Lodge, and a stroll to the vibrant CITY CENTRE.

£1,250 per month

To Let Unfurnished

White Goods - Oven/Hob, Fridge/Freezer and Washing Machine

Parking - Residents Parking

EPC: C

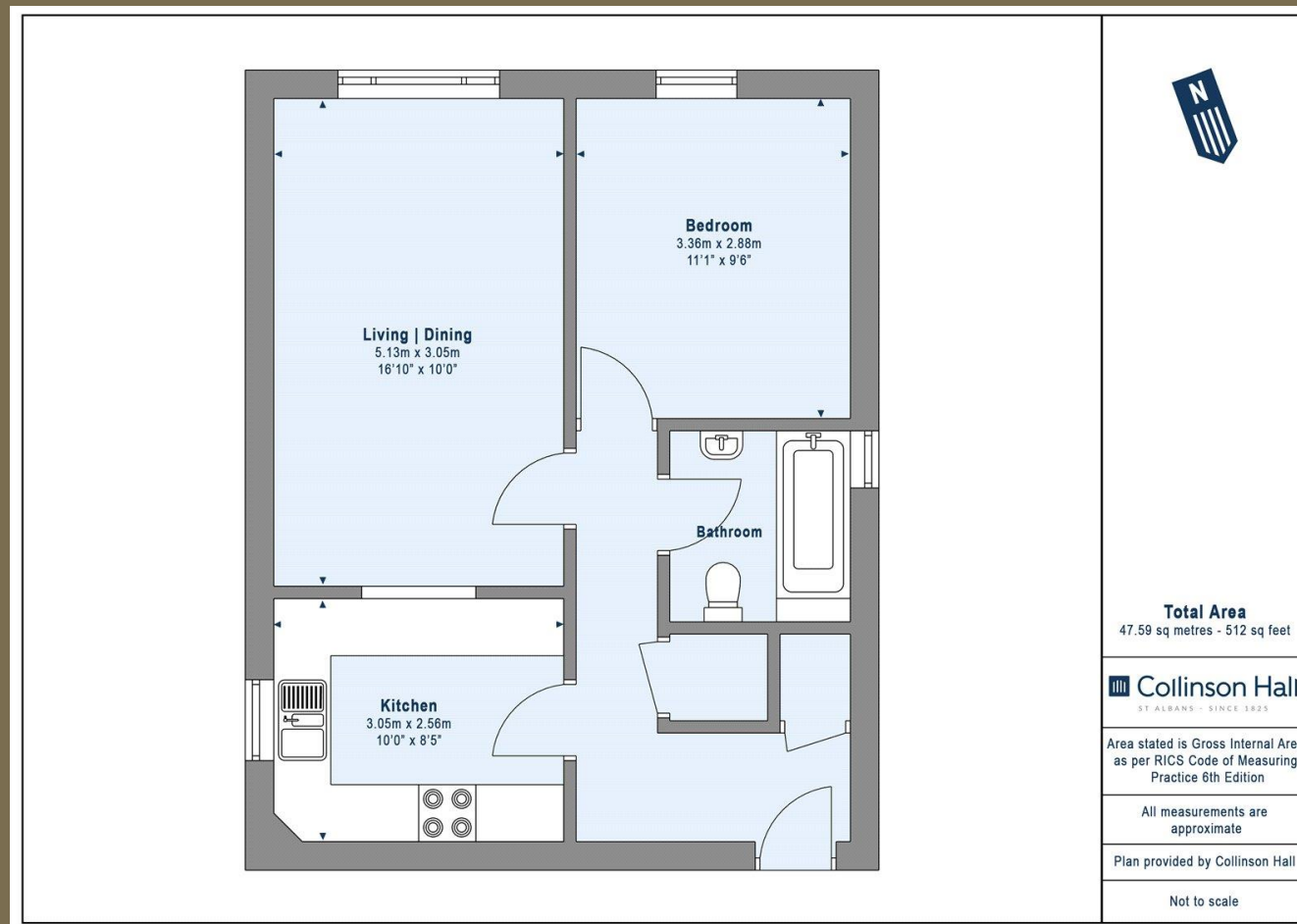
Council Tax Band: C

Available now

Please call for an appointment.







PLEASE NOTE

These particulars do not constitute an offer or contract in whole or in part. Please note that these details have been prepared for prospective purchasers as a general guide. We have endeavoured to be accurate in their preparation, but any intending purchaser should not rely on them as statements or representations of fact. In respect of the floor plans, these are for illustrative purposes only and room sizes are approximate and rounded: they are taken between internal wall surfaces and therefore may include cupboards/shelves, etc. No responsibility is taken for any error. Accordingly they should not be relied upon for carpets and furnishings. The services, systems and appliances at the property have not been tested and no guarantee as to their operability or efficiency can be given.



collinsonhall.co.uk

City Centre Office: 9-11 Victoria Street | St Albans | Hertfordshire | AL1 3UB | Telephone: 01727 843222 | Email: stalbansmail@collinsonhall.co.uk