





A FINE EXAMPLE of a traditional **BAY FRONTED DETACHED** family home, offering **SPACIOUS** and versatile living accommodation, positioned within a **SHORT WALK** of St. Albans Girls School, local shopping, and leisure facilities and a short distance to St Albans **CITY CENTRE**, with all it has to offer.

Offers Over: £900,000

This wonderfully spacious home offers nearly 1,800 square feet of delightful, ample living space, perfect for a growing family. The accommodation is spread across two floors and includes a large entrance hall with an attractive stained glass front door leading to a beautiful bay-fronted living room with a decorative working electric fire, a separate dining room that offers unspoilt views over the garden and an open fireplace, a good-sized stylish kitchen benefitting from Karndean flooring and a small breakfast bar seating area, as well as a home office with independent access from the garden. Additionally, a practical boot room and a convenient cloakroom are located on the ground floor. Upstairs are four ample bedrooms, with the principal bedroom featuring a bay-style window and built-in storage, as well as a lovely family bathroom. There is also access to a part-boarded loft with a light, accessible by a freestanding ladder. Outside, the property boasts an attractive and secluded rear garden, which includes well-stocked borders, seating areas, and well-maintained lawns. Further enhancing the property is a garage with a powered up-and-over door, complemented by convenient side access and a block-paved driveway providing ample off-road parking for several vehicles, including EV charging provision.

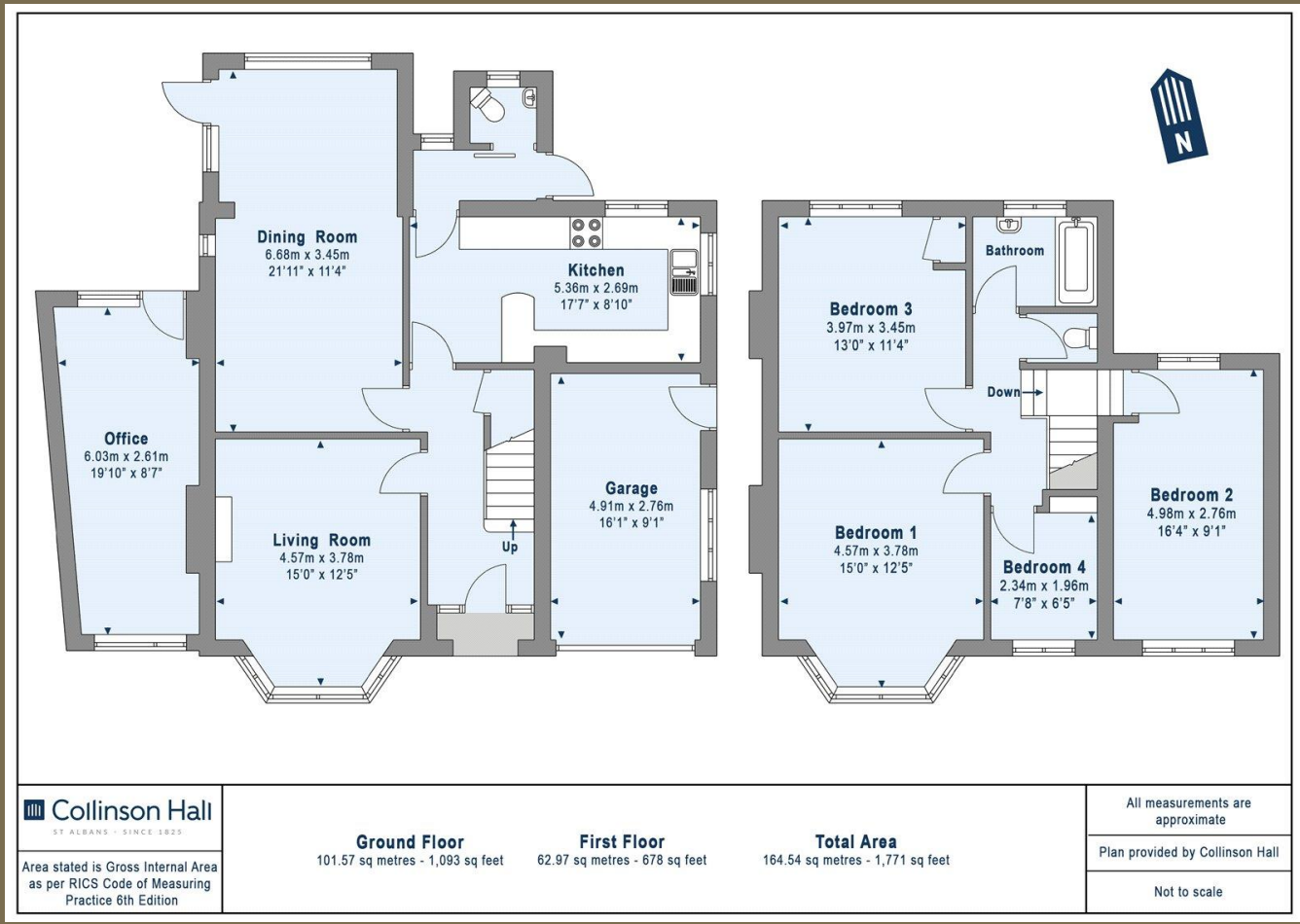
EPC Rating: D 60
Council tax Band: F











PLEASE NOTE

These particulars do not constitute an offer or contract in whole or in part. Please note that these details have been prepared for prospective purchasers as a general guide. We have endeavoured to be accurate in their preparation, but any intending purchaser should not rely on them as statements or representations of fact. In respect of the floor plans, these are for illustrative purposes only and room sizes are approximate and rounded: they are taken between internal wall surfaces and therefore may include cupboards/shelves, etc. No responsibility is taken for any error. Accordingly they should not be relied upon for carpets and furnishings. The services, systems and appliances at the property have not been tested and no guarantee as to their operability or efficiency can be given.



collinsonhall.co.uk

City Centre Office: 9-11 Victoria Street | St Albans | Hertfordshire | AL1 3UB | Telephone: 01727 843222 | Email: stalbansmail@collinsonhall.co.uk