





An EXQUISITE DETACHED family home, showcasing GENEROUS LIVING SPACE and IMPECCABLY PRESENTED throughout. Ideally located on a DESIRABLE ROAD, it's just moments away from outstanding amenities and esteemed local schools.

Guide Price: £1,250,000

This impressive home offers over 3,000 square feet of accommodation arranged over two floors. It features six double bedrooms, three of which have en-suite bathrooms, along with a good-sized family bathroom and a utility room. The living space is exceptional, making it ideal for entertaining. The kitchen, dining, and family room is particularly remarkable, featuring a fitted kitchen with an island and bi-fold doors that open onto a secluded garden. Additionally, there is a separate lounge and a spacious entrance hall. The front of the property includes gated parking for several vehicles.

EPC Rating: B 81  
Council Tax Band: F





Entrance Hall

Lounge 5.14m x 3.80m (16'10" x 12'6").

Cloakroom

Kitchen/Living/Dining 10.46m x 9.41m (34'4" x 30'10").

Bedroom 1 6.12m x 3.97m (20'1" x 13').

Ensuite Bathroom

Walk In Wardrobes

Utility Room

Bedroom 2 4.30m x 3.20m (14'1" x 10'6").

Bedroom 3 4.27m x 3.20m (14' x 10'6").

Bathroom

Bedroom 4 3.27m x 2.79m (10'9" x 9'2").

Walk In Wardrobe

Ensuite Shower Room

Bedroom 5 4.03m x 3.52m (13'3" x 11'7").

Walk In Wardrobe

Ensuite Shower Room

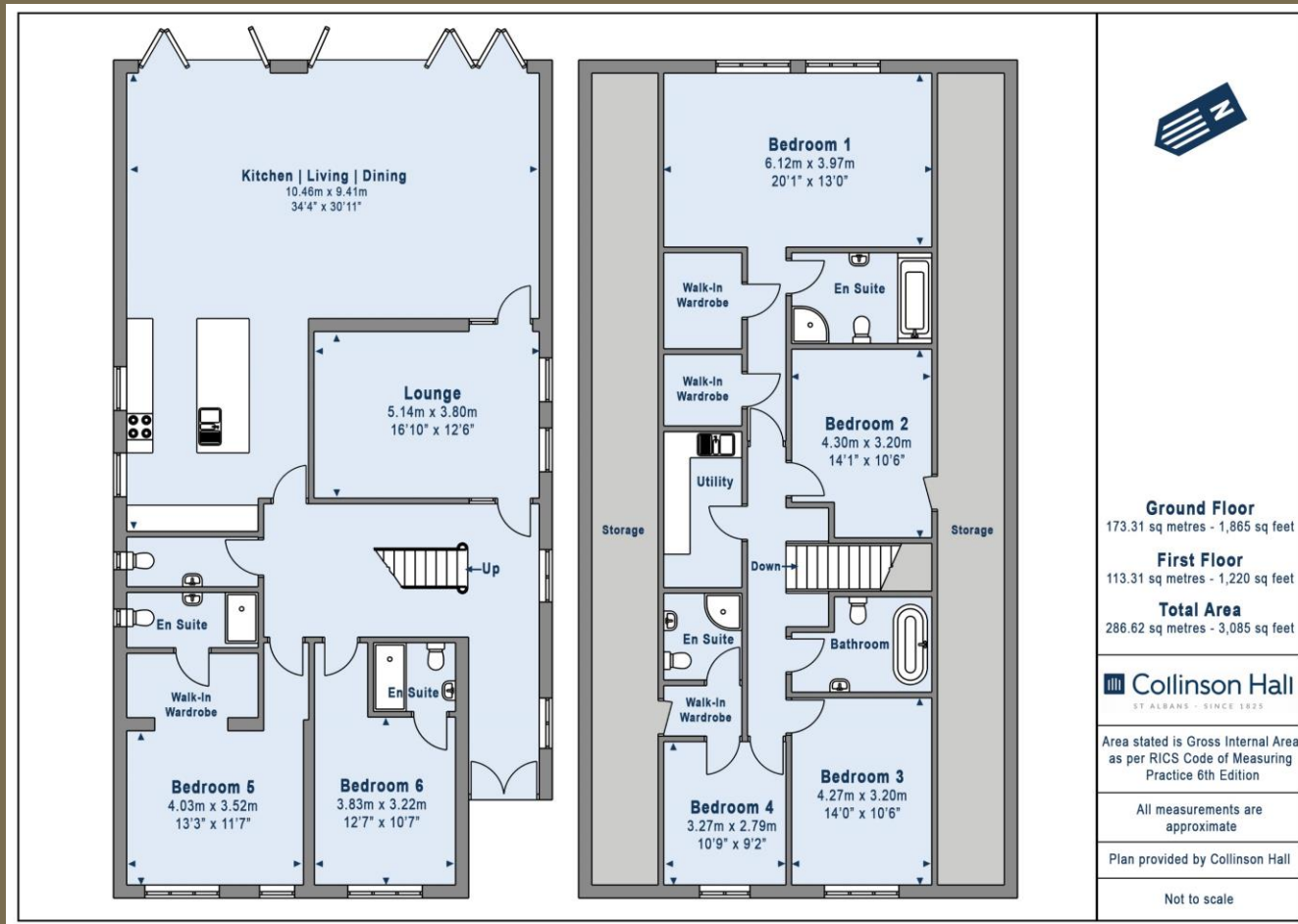
Bedroom 6 3.83m x 3.22m (12'7" x 10'7").

Ensuite Shower Room

Garden







**PLEASE NOTE**

These particulars do not constitute an offer or contract in whole or in part. Please note that these details have been prepared for prospective purchasers as a general guide. We have endeavoured to be accurate in their preparation, but any intending purchaser should not rely on them as statements or representations of fact. In respect of the floor plans, these are for illustrative purposes only and room sizes are approximate and rounded: they are taken between internal wall surfaces and therefore may include cupboards/shelves, etc. No responsibility is taken for any error. Accordingly they should not be relied upon for carpets and furnishings. The services, systems and appliances at the property have not been tested and no guarantee as to their operability or efficiency can be given.



collinsonhall.co.uk

City Centre Office: 9-11 Victoria Street | St Albans | Hertfordshire | AL1 3UB | Telephone: 01727 843222 | Email: stalbansmail@collinsonhall.co.uk

