





A fabulous **THREE DOUBLE BEDROOM**, semi-detached family home presented in **EXCELLENT ORDER** throughout with the benefit of **PARKING** and private rear **GARDEN**, within easy access to the mainline railway **STATION** and reputable local schools.

Offers Over: £725,000

The accommodation is arranged over three floors and offers a very spacious entrance hall with ample storage solutions as well as a cloakroom. There is a beautifully appointed modern kitchen/diner featuring a central island, with patio doors leading out onto the rear garden and a stylish lounge to the front. There are two generous bedrooms and an impressive bathroom on the first floor, and on the third floor, is a beautiful principal bedroom with its own ensuite bathroom and storage. This wonderful home enjoys a splendid rear garden offering both lawn and patio areas, whilst to the front, there is convenient off-street parking.

EPC Rating: C 72
Council Tax Band: D



Entrance Hall

Cloakroom

Living Room 4.51m x 3.49m (14'10" x 11'5").

Kitchen/ Dining 6.27m x 4.40m (20'7" x 14'5").

Bedroom 1 5.13m x 2.77m (16'10" x 9'1").

Ensuite Bathroom

Bedroom 2 4.59m x 3.51m (15'1" x 11'6").

Bedroom 3 3.20m x 2.54m (10'6" x 8'4").

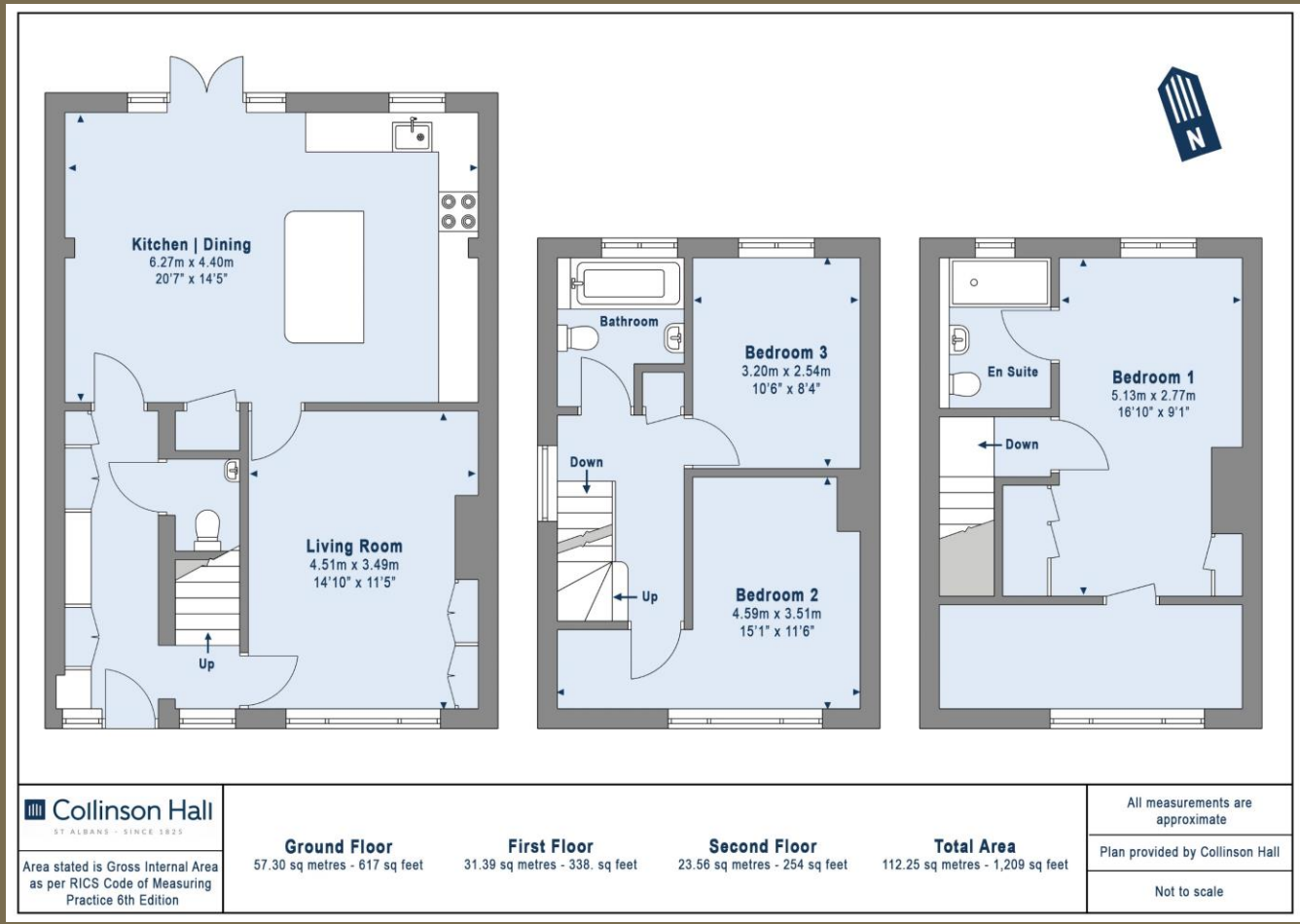
Bathroom

Garden

Driveway







PLEASE NOTE

These particulars do not constitute an offer or contract in whole or in part. Please note that these details have been prepared for prospective purchasers as a general guide. We have endeavoured to be accurate in their preparation, but any intending purchaser should not rely on them as statements or representations of fact. In respect of the floor plans, these are for illustrative purposes only and room sizes are approximate and rounded: they are taken between internal wall surfaces and therefore may include cupboards/shelves, etc. No responsibility is taken for any error. Accordingly they should not be relied upon for carpets and furnishings. The services, systems and appliances at the property have not been tested and no guarantee as to their operability or efficiency can be given.



collinsonhall.co.uk

City Centre Office: 9-11 Victoria Street | St Albans | Hertfordshire | AL1 3UB | Telephone: 01727 843222 | Email: stalbansmail@collinsonhall.co.uk

