





A SPACIOUS and BEAUTIFULLY PRESENTED three-bedroom family home situated within a popular location in **CHISWELL GREEN**. The property has been thoughtfully **EXTENDED and REFURBISHED** to an impeccable standard creating a bright and stylish interior.

Asking Price: £925,000

The property spans in excess of 1550 square feet of accommodation arranged over two levels comprising a spacious entrance hall with bespoke storage, sitting room, study/dining room, utility room and a fabulous open plan kitchen diner with hi quality appliances and bi folding doors opening to the rear garden. On the first floor the principal bedroom benefits from a fabulous walk-in wardrobe, which was previously a fourth bedroom, there are two further double bedrooms, one with an ensuite bathroom, a stylish family bathroom and access to loft space. Externally, the driveway provides off road parking and to the rear leads to a landscaped rear garden.

Council Tax Band: E





Entrance Hall

Living Room 3.96m x 3.90m (13' x 12'10").

Kitchen/Dining Room 7.57m x 7.17m (24'10" x 23'6").

Utility Room

Cloakroom

Bedroom 1 5.96m x 3.96m (19'7" x 13').

Bedroom 2 3.46m x 3.21m (11'4" x 10'6").

Bedroom 3 4.99m x 2.58m (16'4" x 8'6").

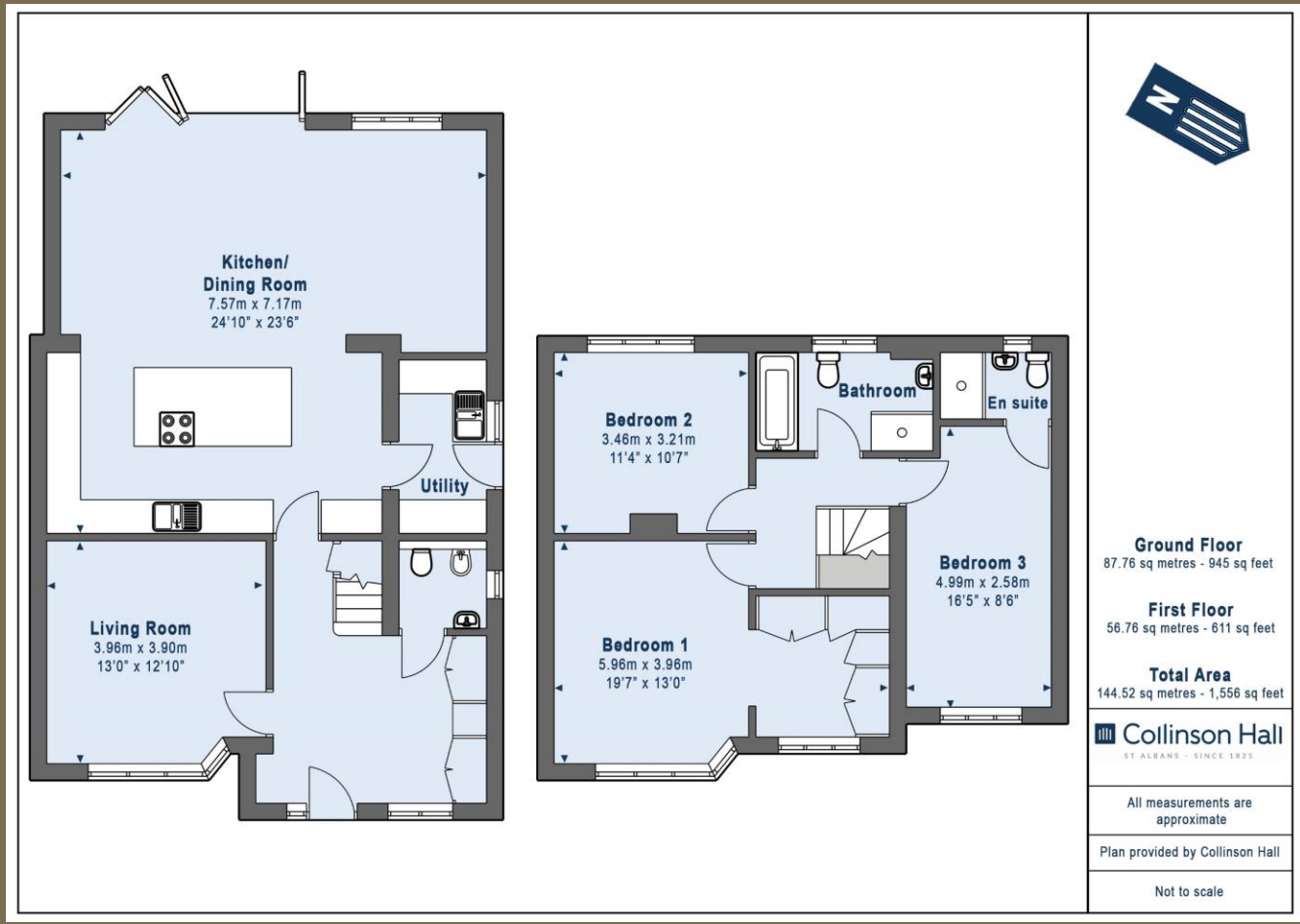
Ensuite Bathroom

Bathroom

Garden







PLEASE NOTE

These particulars do not constitute an offer or contract in whole or in part. Please note that these details have been prepared for prospective purchasers as a general guide. We have endeavoured to be accurate in their preparation, but any intending purchaser should not rely on them as statements or representations of fact. In respect of the floor plans, these are for illustrative purposes only and room sizes are approximate and rounded: they are taken between internal wall surfaces and therefore may include cupboards/shelves, etc. No responsibility is taken for any error. Accordingly they should not be relied upon for carpets and furnishings. The services, systems and appliances at the property have not been tested and no guarantee as to their operability or efficiency can be given.



collinsonhall.co.uk

City Centre Office: 9-11 Victoria Street | St Albans | Hertfordshire | AL1 3UB | Telephone: 01727 843222 | Email: stalbansmail@collinsonhall.co.uk