





Situated in a quiet CUL-DE-SAC on the ever popular JERSEY FARM this light and airy, **FOUR BEDROOM** semi-detached family home offers well-presented and **SPACIOUS** accommodation arranged over two floors, and benefits from a private driveway, located close to local amenities and **EXCELLENT SCHOOLING** including Sandringham School.

Offers Over: £650,000

This well-presented four-bedroom home offers thoughtfully arranged accommodation over two floors, providing a practical and versatile layout. The ground floor is centred around a generous open-plan kitchen, living and dining area, creating a comfortable and sociable living space. The kitchen is well positioned within the room, while the open layout allows for flexible furnishing and everyday family living. Double doors from the living area enhance natural light and provide access to the outside. Also located on the ground floor is a double bedroom with en-suite facilities, offering flexibility for guest accommodation, home working, or multi-generational living. The first floor provides three further bedrooms, including a well-proportioned principal bedroom, along with a stylish family bathroom. Externally, the property benefits from a pleasant and secluded rear garden enjoying a westerly aspect, with a garden and driveway to the front.

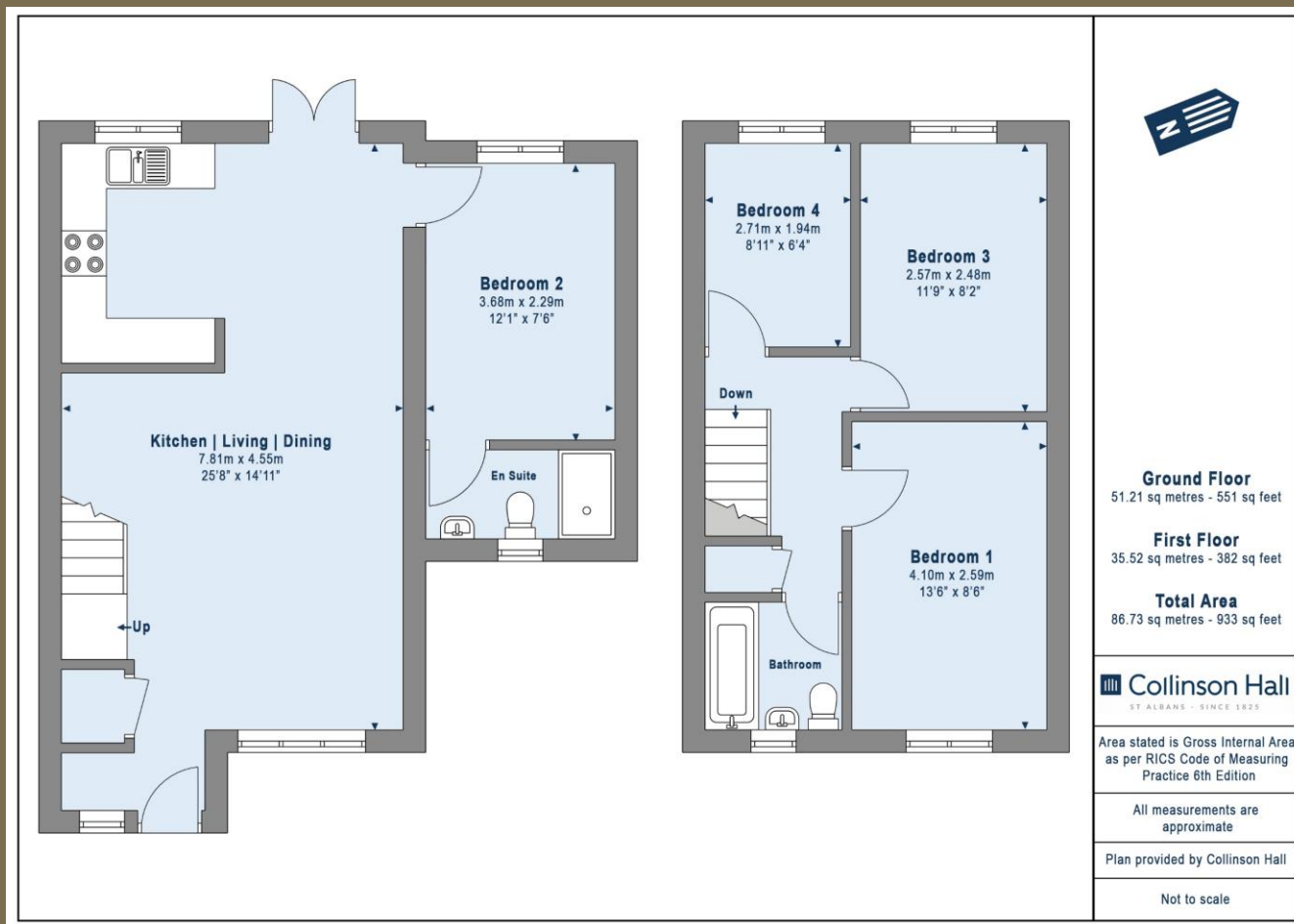
EPC Rating: C 71
Council Tax Band: E











PLEASE NOTE

These particulars do not constitute an offer or contract in whole or in part. Please note that these details have been prepared for prospective purchasers as a general guide. We have endeavoured to be accurate in their preparation, but any intending purchaser should not rely on them as statements or representations of fact. In respect of the floor plans, these are for illustrative purposes only and room sizes are approximate and rounded: they are taken between internal wall surfaces and therefore may include cupboards/shelves, etc. No responsibility is taken for any error. Accordingly they should not be relied upon for carpets and furnishings. The services, systems and appliances at the property have not been tested and no guarantee as to their operability or efficiency can be given.



collinsonhall.co.uk

City Centre Office: 9-11 Victoria Street | St Albans | Hertfordshire | AL1 3UB | Telephone: 01727 843222 | Email: stalbansmail@collinsonhall.co.uk