





A modern TWO DOUBLE BEDROOM apartment located near The University of Hatfield, Galleria and EXCELLENT TRANSPORT NETWORKS including the A1(M) and Hatfield Mainline Station.

Guide Price: £250,000

This modern, third floor apartment offers stylish accommodation in the region of 630 square foot and includes a spacious lounge with open plan modern kitchen, two double bedrooms and family bathroom. The property is double glazed and benefits from gas radiator heating.

EPC Rating: B 81

Council Tax Band: C

Lease Information: 999 year lease, starting from 1st of January, 2003.



Entrance Hall

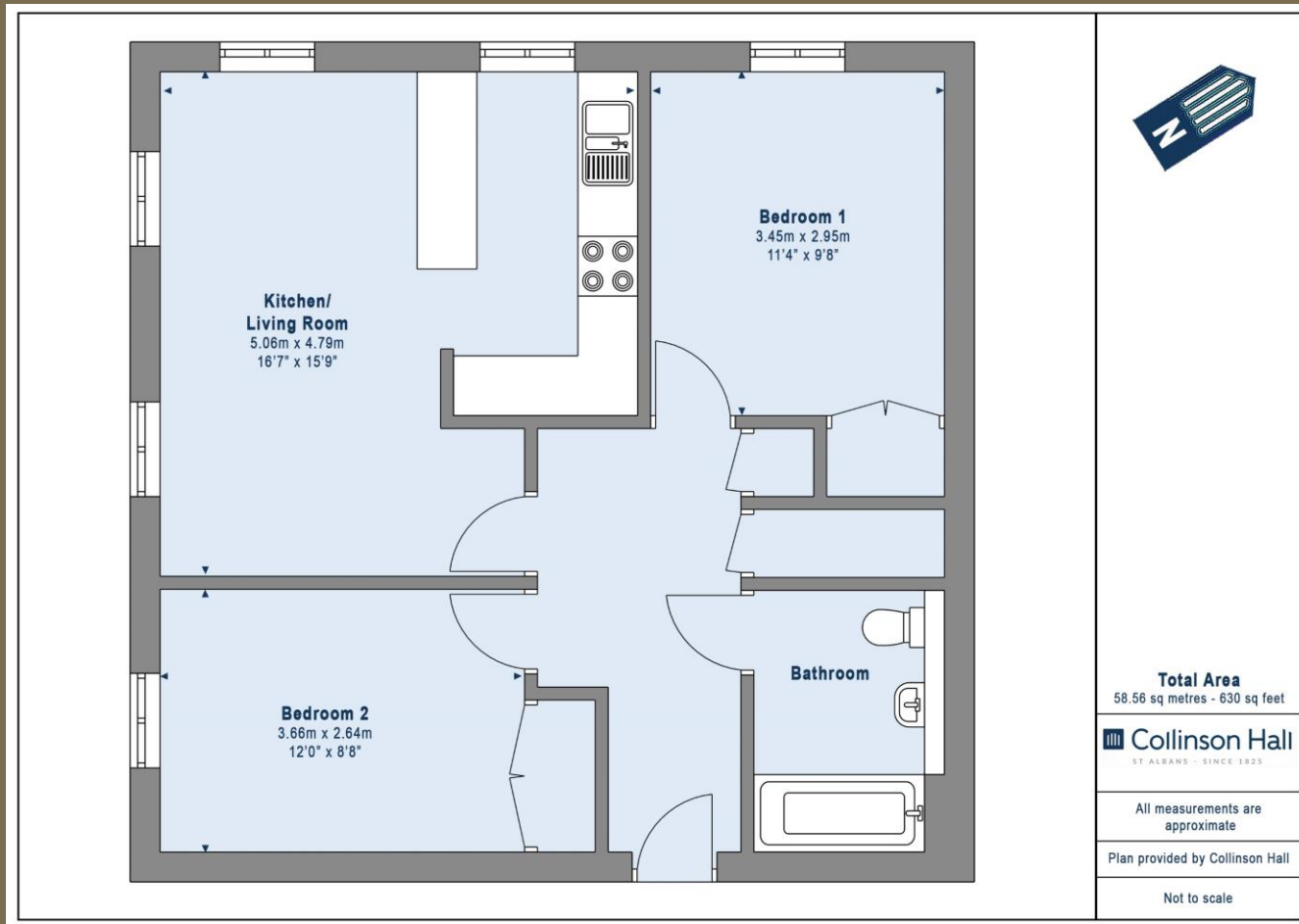
Kitchen/Living Room $5.06m \times 4.79m$ (16'7" x 15'9").

Bedroom 1 $3.45m \times 2.95m$ (11'4" x 9'8").

Bedroom 2 $3.66m \times 2.64m$ (12' x 8'8").

Bathroom





PLEASE NOTE

These particulars do not constitute an offer or contract in whole or in part. Please note that these details have been prepared for prospective purchasers as a general guide. We have endeavoured to be accurate in their preparation, but any intending purchaser should not rely on them as statements or representations of fact. In respect of the floor plans, these are for illustrative purposes only and room sizes are approximate and rounded: they are taken between internal wall surfaces and therefore may include cupboards/shelves, etc. No responsibility is taken for any error. Accordingly they should not be relied upon for carpets and furnishings. The services, systems and appliances at the property have not been tested and no guarantee as to their operability or efficiency can be given.



collinsonhall.co.uk

City Centre Office: 9-11 Victoria Street | St Albans | Hertfordshire | AL1 3UB | Telephone: 01727 843222 | Email: stalbansmail@collinsonhall.co.uk

