





Set in the heart of CHISWELL GREEN and quietly situated in a tree-lined avenue, this **THREE BEDROOM BUNGALOW** positioned on an **ENVIOUS PLOT**, offers a range of possibilities for further extension, and is within a short walking distance of Killigrew School and local amenities. Offered for sale **CHAIN FREE**.

**Guide Price: £995,000**

This wonderful home is in excellent order and arranged to offer versatile living accommodation over 1200 sqft. With a light and airy feel throughout, the accommodation briefly comprises an entrance hall, a large lounge with patio doors to the garden, a modern-style kitchen with views to the garden, providing plenty of space for storage and entertaining, and a dining room that also leads to the garden. There are three well-proportioned bedrooms and a stylish family bathroom offering both a bath and a separate shower enclosure. Externally, there is a well-tended, generous rear and side garden, and to the front, parking for up to four cars.

EPC Rating: C 72  
Council Tax Band: F





Entrance Hall

Living Room 7.44m x 3.38m (24'5" x 11'1").

Kitchen 4.35m x 3.66m (14'3" x 12').

Dining Room 5.90m x 2.56m (19'4" x 8'5").

Bedroom 1 3.97m x 3.49m (13' x 11'5").

Bedroom 2 3.48m x 3.38m (11'5" x 11'1").

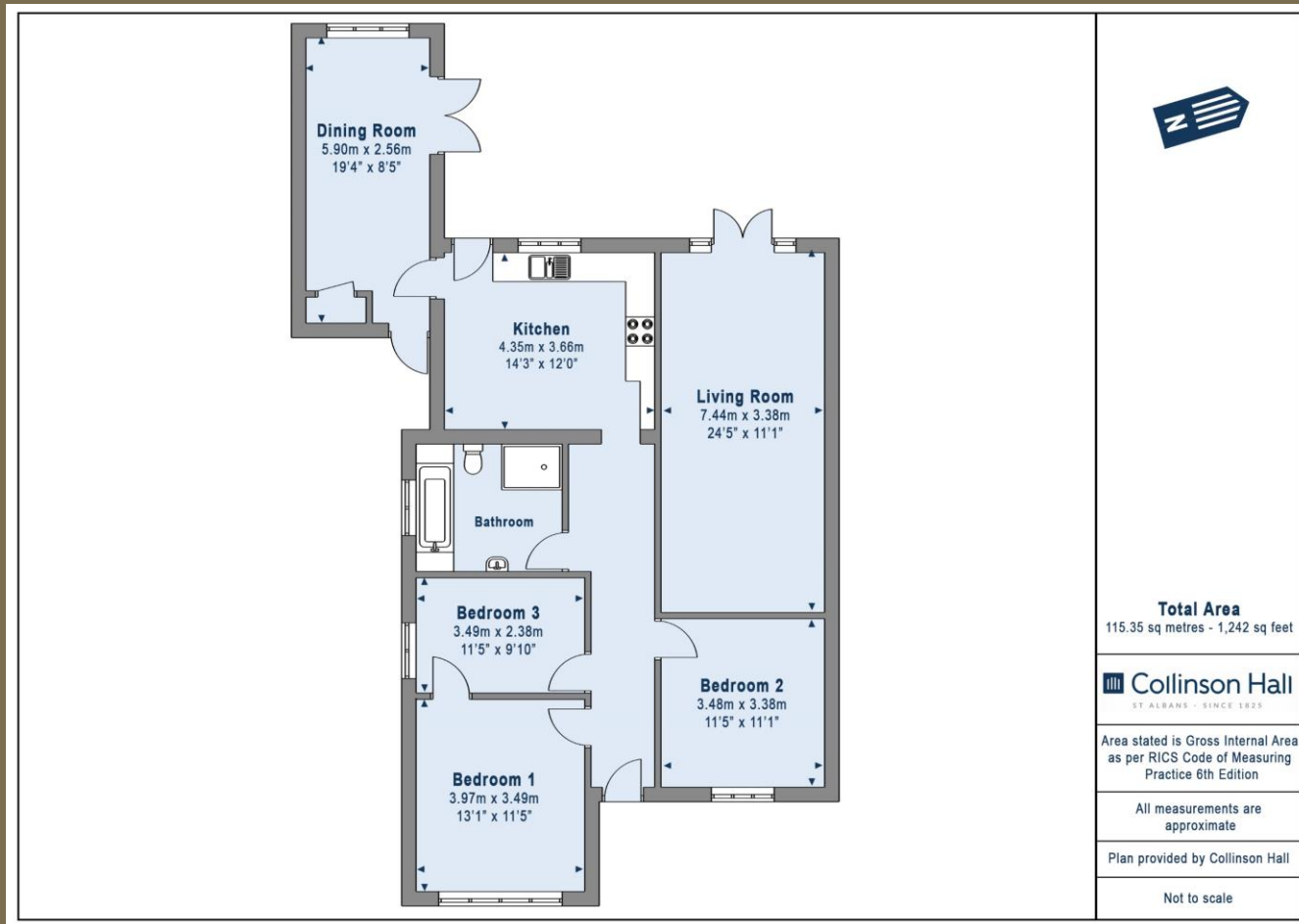
Bedroom 3 3.49m x 2.38m (11'5" x 7'10").

Bathroom

Garden







**PLEASE NOTE**

These particulars do not constitute an offer or contract in whole or in part. Please note that these details have been prepared for prospective purchasers as a general guide. We have endeavoured to be accurate in their preparation, but any intending purchaser should not rely on them as statements or representations of fact. In respect of the floor plans, these are for illustrative purposes only and room sizes are approximate and rounded: they are taken between internal wall surfaces and therefore may include cupboards/shelves, etc. No responsibility is taken for any error. Accordingly they should not be relied upon for carpets and furnishings. The services, systems and appliances at the property have not been tested and no guarantee as to their operability or efficiency can be given.



collinsonhall.co.uk

City Centre Office: 9-11 Victoria Street | St Albans | Hertfordshire | AL1 3UB | Telephone: 01727 843222 | Email: stalbansmail@collinsonhall.co.uk