





A SPACIOUS TWO DOUBLE BEDROOM first floor apartment positioned within a SHORT WALK of St. Albans Station, Clarence Park and CITY CENTRE.

£1,800 per month

The property features a spacious lounge with double doors that open onto a south-easterly balcony. The modern, re-fitted kitchen, along with the en-suite and main bathroom, enhances its appeal. Additional benefits include an allocated parking space. Residents can also enjoy communal lawns and designated bin storage areas.

To Let Unfurnished

White Goods: Oven/Hob, Fridge/Freezer, Washing Machine and Dishwasher

Council Tax Band: E

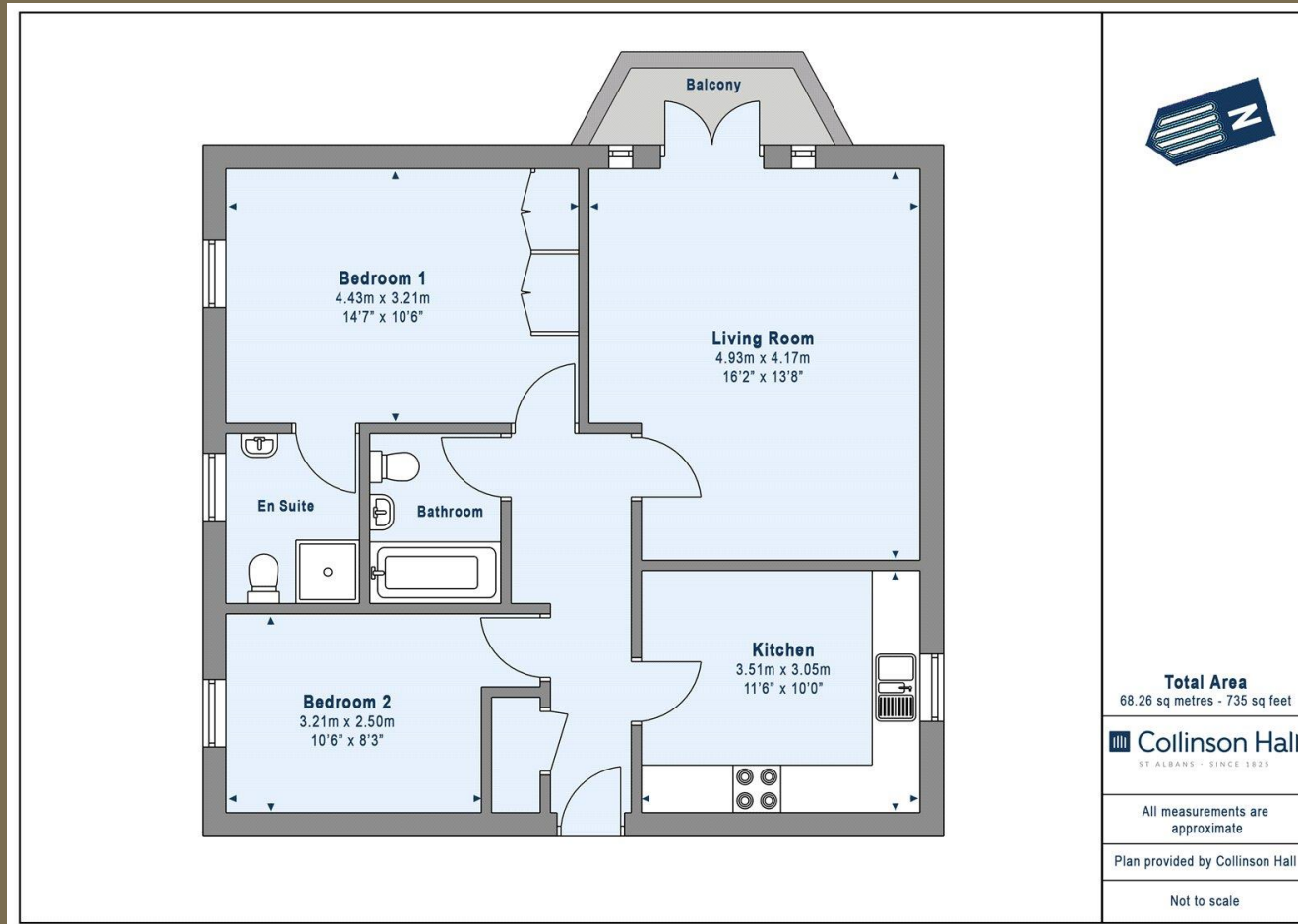
EPC Rating: C 77

Available from 27th August 2026

Viewings: Saturday 11th July between 2.15-3.30pm - by appointment only.







PLEASE NOTE

These particulars do not constitute an offer or contract in whole or in part. Please note that these details have been prepared for prospective purchasers as a general guide. We have endeavoured to be accurate in their preparation, but any intending purchaser should not rely on them as statements or representations of fact. In respect of the floor plans, these are for illustrative purposes only and room sizes are approximate and rounded: they are taken between internal wall surfaces and therefore may include cupboards/shelves, etc. No responsibility is taken for any error. Accordingly they should not be relied upon for carpets and furnishings. The services, systems and appliances at the property have not been tested and no guarantee as to their operability or efficiency can be given.



collinsonhall.co.uk

City Centre Office: 9-11 Victoria Street | St Albans | Hertfordshire | AL1 3UB | Telephone: 01727 843222 | Email: stalbansmail@collinsonhall.co.uk