





A truly STUNNING FOUR BEDROOM home positioned within ST STEPHENS PARISH offering space and STYLE that can only be appreciated in person.

Offers Over: £1,500,000

A wonderful hallway immediately provokes a luxurious feeling of space with seamless connectivity to a fitted study ready for working from home, a separate lounge for those quiet evenings and a show-stopping lounge/dining/kitchen room with fitted high-end appliances, spectacular floor to ceiling sliding doors which truly bring the outdoors in.

There are four generous double bedrooms and as one would expect a modern stylish en-suite serving the principal bedroom and a similar quality family bathroom serving the other three bedrooms. The property is finished to the highest of standards and the garden has been meticulously landscaped to offer seclusion as well as ample entertaining space day or night with well-placed courtesy lighting and external power supply. To the front, there is ample parking for several vehicles and a detached garage.

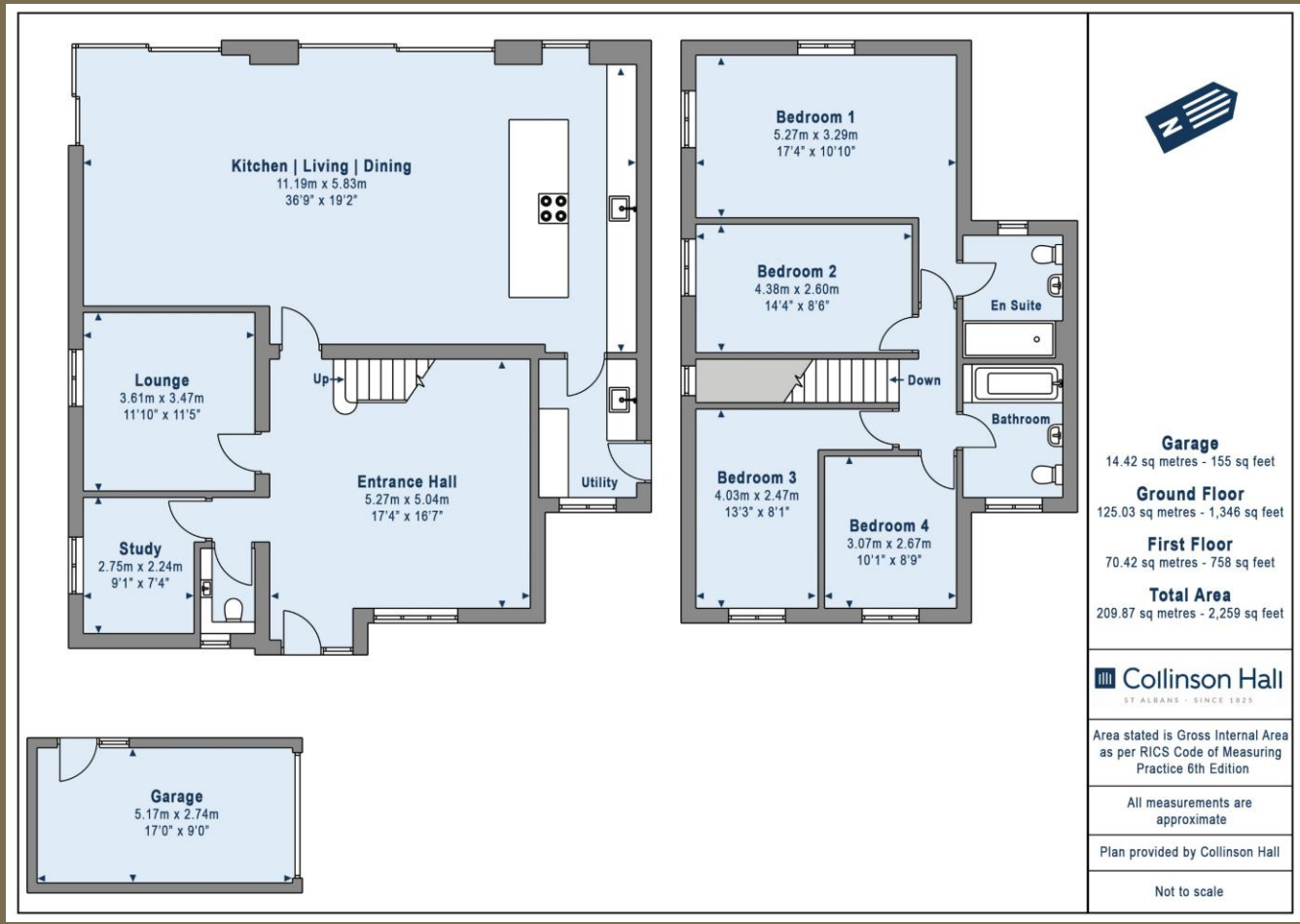
EPC Rating: TBC











PLEASE NOTE

These particulars do not constitute an offer or contract in whole or in part. Please note that these details have been prepared for prospective purchasers as a general guide. We have endeavoured to be accurate in their preparation, but any intending purchaser should not rely on them as statements or representations of fact. In respect of the floor plans, these are for illustrative purposes only and room sizes are approximate and rounded: they are taken between internal wall surfaces and therefore may include cupboards/shelves, etc. No responsibility is taken for any error. Accordingly they should not be relied upon for carpets and furnishings. The services, systems and appliances at the property have not been tested and no guarantee as to their operability or efficiency can be given.



collinsonhall.co.uk

City Centre Office: 9-11 Victoria Street | St Albans | Hertfordshire | AL1 3UB | Telephone: 01727 843222 | Email: stalbansmail@collinsonhall.co.uk