





Simply stunning SEMI DETACHED DORMA BUNGALOW which is situated on a SOUGHT AFTER TREE LINED AVENUE with a LENGTHY LAWNED GARDEN and AMPLE OFF STREET PARKING. It is close to excellent amenities, REPUTABLE SCHOOLS, and FANTASTIC TRANSPORT LINKS, to St. Albans, Watford and the surrounding motorway network M1 and M25.

Asking Price: £1,000,000

This spacious home offers versatile accommodation to include, a bright entrance hall, a bay fronted living room leading into the desirable family room, separate dining room which provides access to a modern and stylish kitchen. The ground floor also includes a utility room, office, bathroom, and a double bedroom with doors leading to the garden and ensuite bathroom. To the first floor there are two further good-sized bedrooms, each having their own ensuite bathrooms and storage facilities. Externally, this wonderful property benefits from a well-kept rear garden and parking for several vehicles to the front.

EPC Rating: TBC
Council Tax Band: E





Entrance Hall

Lounge 3.52m x 3.35m (11'7" x 11').

Living Room 5.84m x 4.61m (19'2" x 15'1").

Kitchen/Dining 7.52m x 4.46m (24'8" x 14'8").

Cloakroom

Utility Room

Bedroom 1 4.61m x 4.11m (15'1" x 13'6").

Ensuite Bathroom

Bedroom 2 6.65m x 3.79m (21'10" x 12'5").

Bedroom 3 6.65m x 3.23m (21'10" x 10'7").

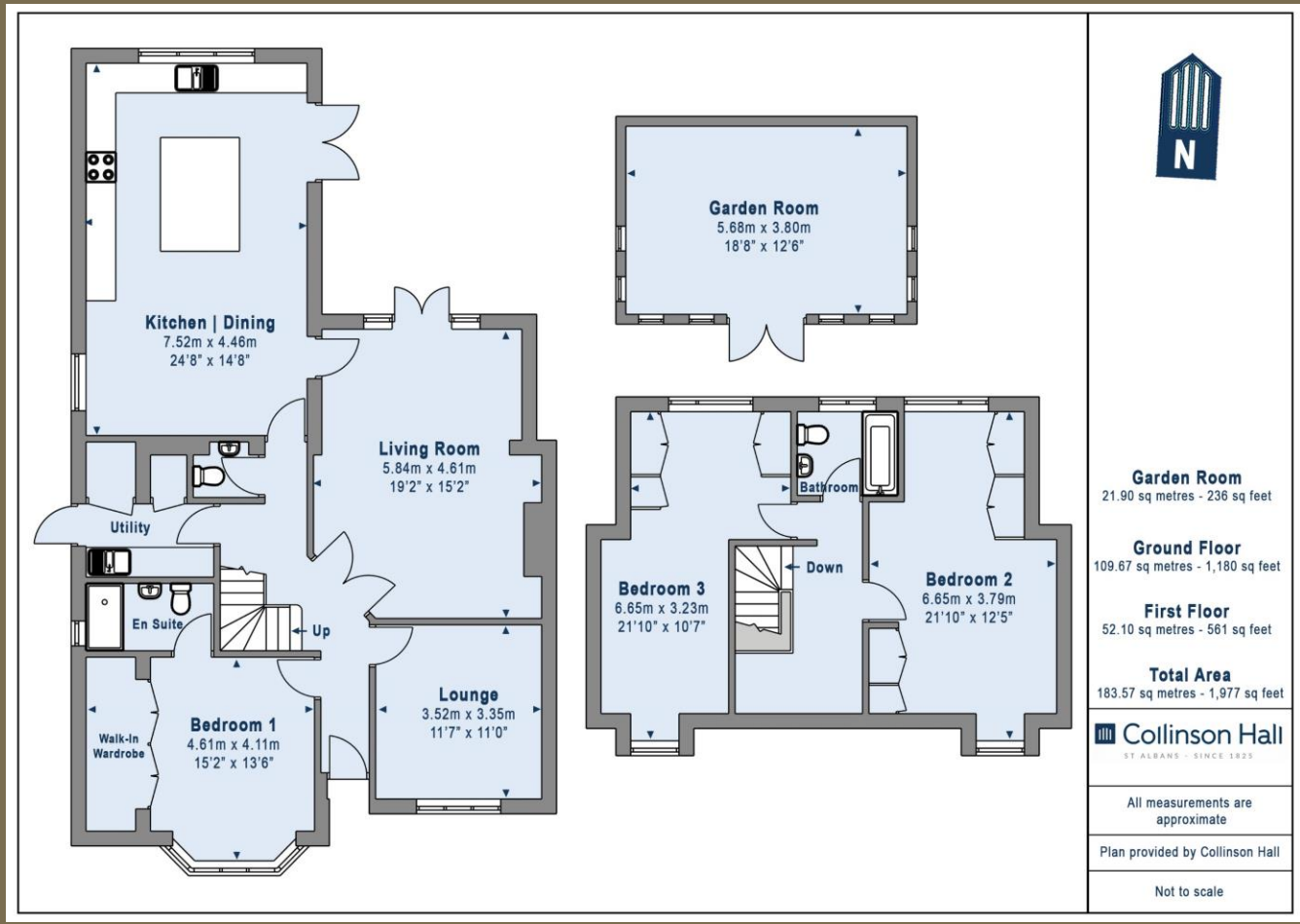
Bathroom

Garden

Garden Room 5.68m x 3.80m (18'8" x 12'6").







PLEASE NOTE

These particulars do not constitute an offer or contract in whole or in part. Please note that these details have been prepared for prospective purchasers as a general guide. We have endeavoured to be accurate in their preparation, but any intending purchaser should not rely on them as statements or representations of fact. In respect of the floor plans, these are for illustrative purposes only and room sizes are approximate and rounded: they are taken between internal wall surfaces and therefore may include cupboards/shelves, etc. No responsibility is taken for any error. Accordingly they should not be relied upon for carpets and furnishings. The services, systems and appliances at the property have not been tested and no guarantee as to their operability or efficiency can be given.



collinsonhall.co.uk

City Centre Office: 9-11 Victoria Street | St Albans | Hertfordshire | AL1 3UB | Telephone: 01727 843222 | Email: stalbansmail@collinsonhall.co.uk