





A CHARMING two-bedroom PERIOD PROPERTY situated in the picturesque village of Childwickbury, located close to both St.Albans and Harpenden. The property features a MODERN KITCHEN and BATHROOM SUITE and offers views over fields.

£1,900 per month

To Let Unfurnished

12 Months Tenancy

White Goods: Oven/Hob

Parking: Available to the front

Council Tax Band: D

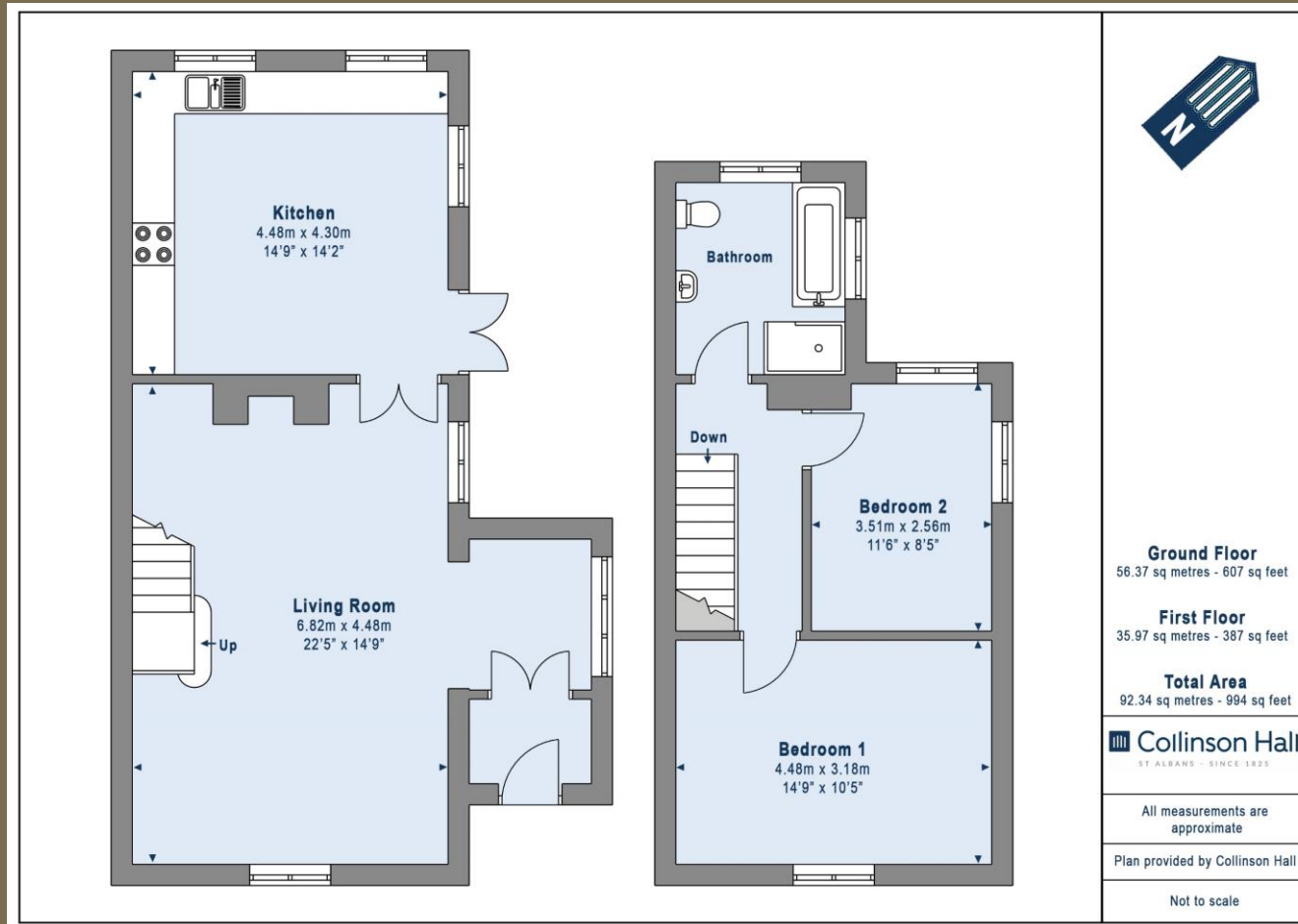
EPC Rating: E 53

Available From: Monday 21st August 2023

Viewings: Open Day on Saturday 22nd of July between 12 and 2pm. Please call for an appointment.







PLEASE NOTE

These particulars do not constitute an offer or contract in whole or in part. Please note that these details have been prepared for prospective purchasers as a general guide. We have endeavoured to be accurate in their preparation, but any intending purchaser should not rely on them as statements or representations of fact. In respect of the floor plans, these are for illustrative purposes only and room sizes are approximate and rounded: they are taken between internal wall surfaces and therefore may include cupboards/shelves, etc. No responsibility is taken for any error. Accordingly they should not be relied upon for carpets and furnishings. The services, systems and appliances at the property have not been tested and no guarantee as to their operability or efficiency can be given.



collinsonhall.co.uk

City Centre Office: 9-11 Victoria Street | St Albans | Hertfordshire | AL1 3UB | Telephone: 01727 843222 | Email: stalbansmail@collinsonhall.co.uk