





A WELL-PRESENTED one-bedroom MEWS STYLE home, offering bright and well-proportioned accommodation in a convenient and sought-after CITY CENTRE location.

£1,400 per month

The property features a welcoming entrance hall, a spacious open-plan kitchen and living area, creating an ideal space for both everyday living and entertaining. The kitchen is fitted with a range of units and enjoys a practical layout, while the living space benefits from excellent natural light. The apartment also offers a generous double bedroom and a well-appointed bathroom.

Westbourne Mews enjoys a prime central location, within easy reach of St Albans City station, the city centre and an excellent range of shops, cafés, restaurants and leisure facilities. Fast rail services to London St Pancras make it ideal for commuters, while nearby Clarence Park and Verulamium Park provide attractive green spaces to enjoy.



To Let Unfurnished

12 Month Tenancy

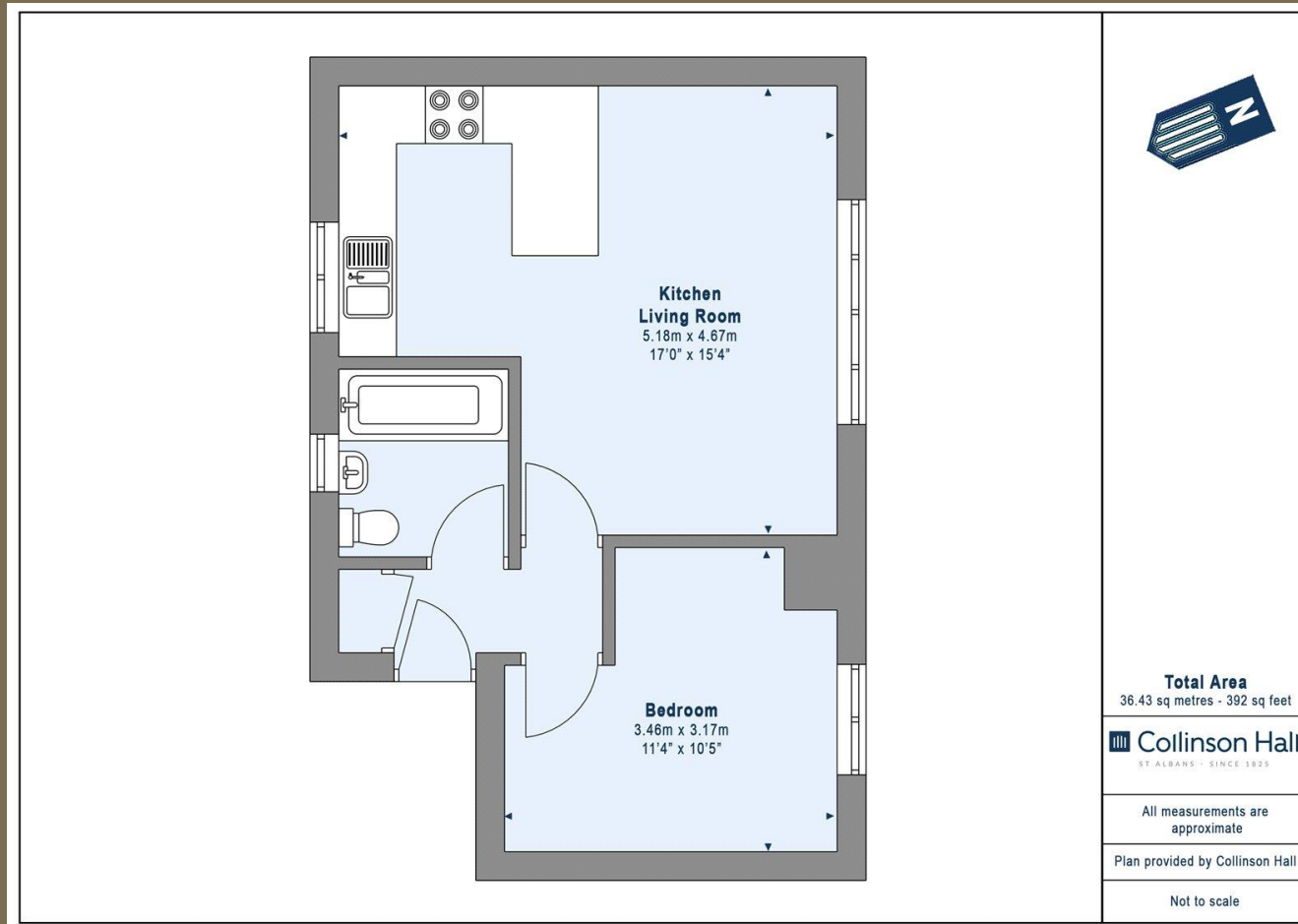
Council Tax Band: C

EPC Rating: E

Available from 5th September 2026

Viewings: Friday 12th June between 9 to 12 - by appointment only.





PLEASE NOTE

These particulars do not constitute an offer or contract in whole or in part. Please note that these details have been prepared for prospective purchasers as a general guide. We have endeavoured to be accurate in their preparation, but any intending purchaser should not rely on them as statements or representations of fact. In respect of the floor plans, these are for illustrative purposes only and room sizes are approximate and rounded: they are taken between internal wall surfaces and therefore may include cupboards/shelves, etc. No responsibility is taken for any error. Accordingly they should not be relied upon for carpets and furnishings. The services, systems and appliances at the property have not been tested and no guarantee as to their operability or efficiency can be given.



collinsonhall.co.uk

City Centre Office: 9-11 Victoria Street | St Albans | Hertfordshire | AL1 3UB | Telephone: 01727 843222 | Email: stalbansmail@collinsonhall.co.uk