





Situated on this popular road and within a **SHORT DISTANCE OF MAINLINE STATION** and range of local facilities, this beautifully maintained **FOUR BEDROOM** home has been extended from its original design to offer **SPACIOUS WELL DESIGNED ACCOMODATION**.

Guide Price: £900,000

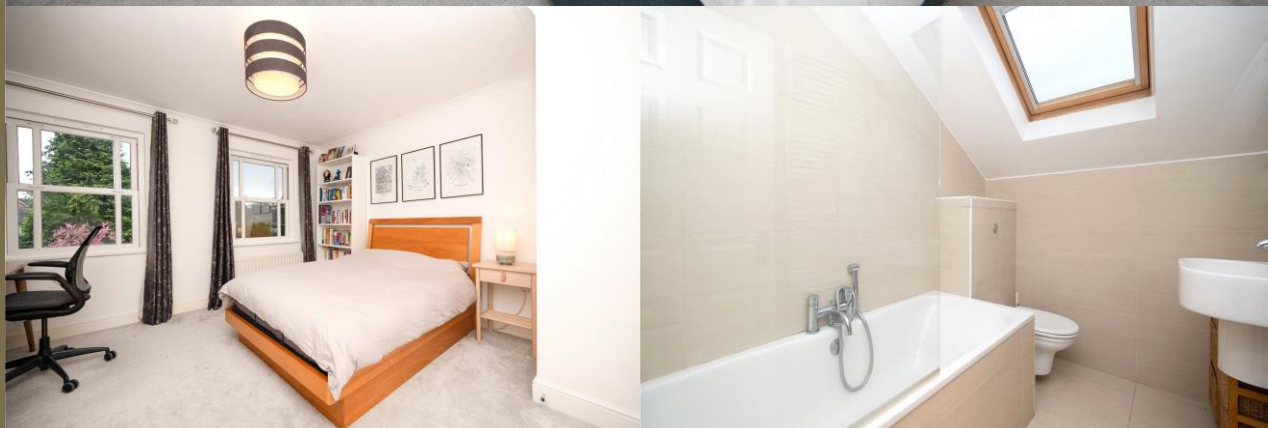
The property boasts over 1500 square feet of accommodation arranged over three levels to comprise; an entrance hall, bay fronted formal lounge area, a superb newly fitted open plan kitchen/dining room with integrated units, underfloor heating, a watersoftner and smart bi-folding doors with views to the garden, and a useful cloakroom.

On the first floor, you find two double bedrooms, both with fitted storage, and a well-appointed family bathroom. To the second floor, there are two further bedrooms with an en-suite to the main room.

Externally there is a pretty landscaped private rear garden and to the front, a paved and enclosed area.



**Collinson
Hall**





Entrance Hall

Living Room 4.37m x 4.30m (14'4" x 14'1").

Kitchen/Dining Room 7.37m x 6.98m (24'2" x 22'11").

Cloakroom

Bedroom 1 3.99m x 3.92m (13'1" x 12'10").

Bedroom 2 3.99m x 3.50m (13'1" x 11'6").

Shower Room

Bedroom 3 3.99m x 3.92m (13'1" x 12'10").

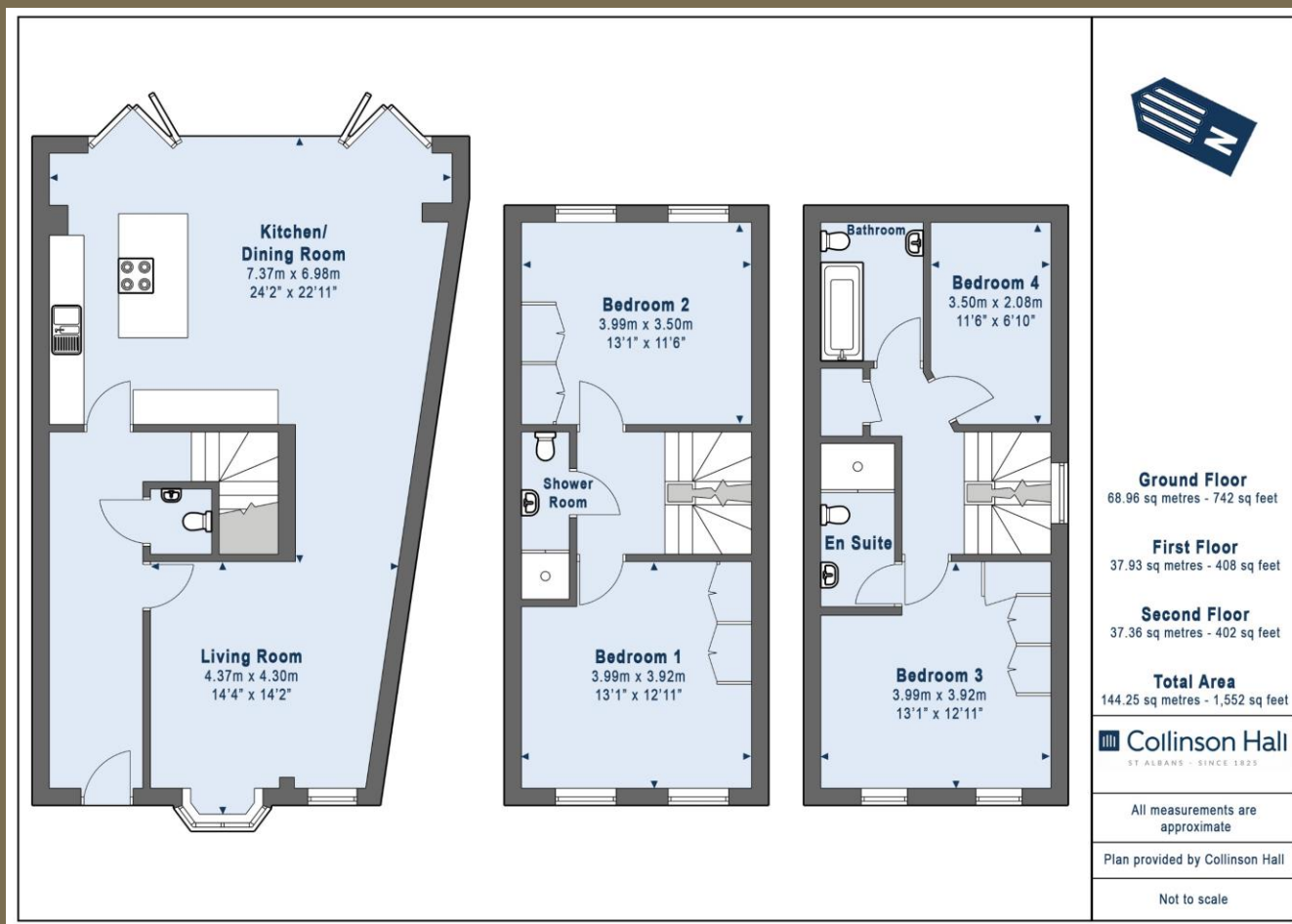
Bedroom 4 3.50m x 2.08m (11'6" x 6'10").

Bathroom

Garden







PLEASE NOTE

These particulars do not constitute an offer or contract in whole or in part. Please note that these details have been prepared for prospective purchasers as a general guide. We have endeavoured to be accurate in their preparation, but any intending purchaser should not rely on them as statements or representations of fact. In respect of the floor plans, these are for illustrative purposes only and room sizes are approximate and rounded: they are taken between internal wall surfaces and therefore may include cupboards/shelves, etc. No responsibility is taken for any error. Accordingly they should not be relied upon for carpets and furnishings. The services, systems and appliances at the property have not been tested and no guarantee as to their operability or efficiency can be given.



collinsonhall.co.uk

City Centre Office: 9-11 Victoria Street | St Albans | Hertfordshire | AL1 3UB | Telephone: 01727 843222 | Email: stalbansmail@collinsonhall.co.uk