





A MAGNIFICENT one double bedroom CONTEMPORARY ground floor apartment with a MODERN STYLISH INTERIOR in this highly sought-after HISTORIC FACTORY CONVERSION within walking distance of the THAMESLINK station.

£1,450 per month

To Let Unfurnished

12 Month Tenancy

White Goods: Oven/Hob, Fridge/freezer, Dishwasher, Washer/Dryer

One allocated Parking

Council Tax: C

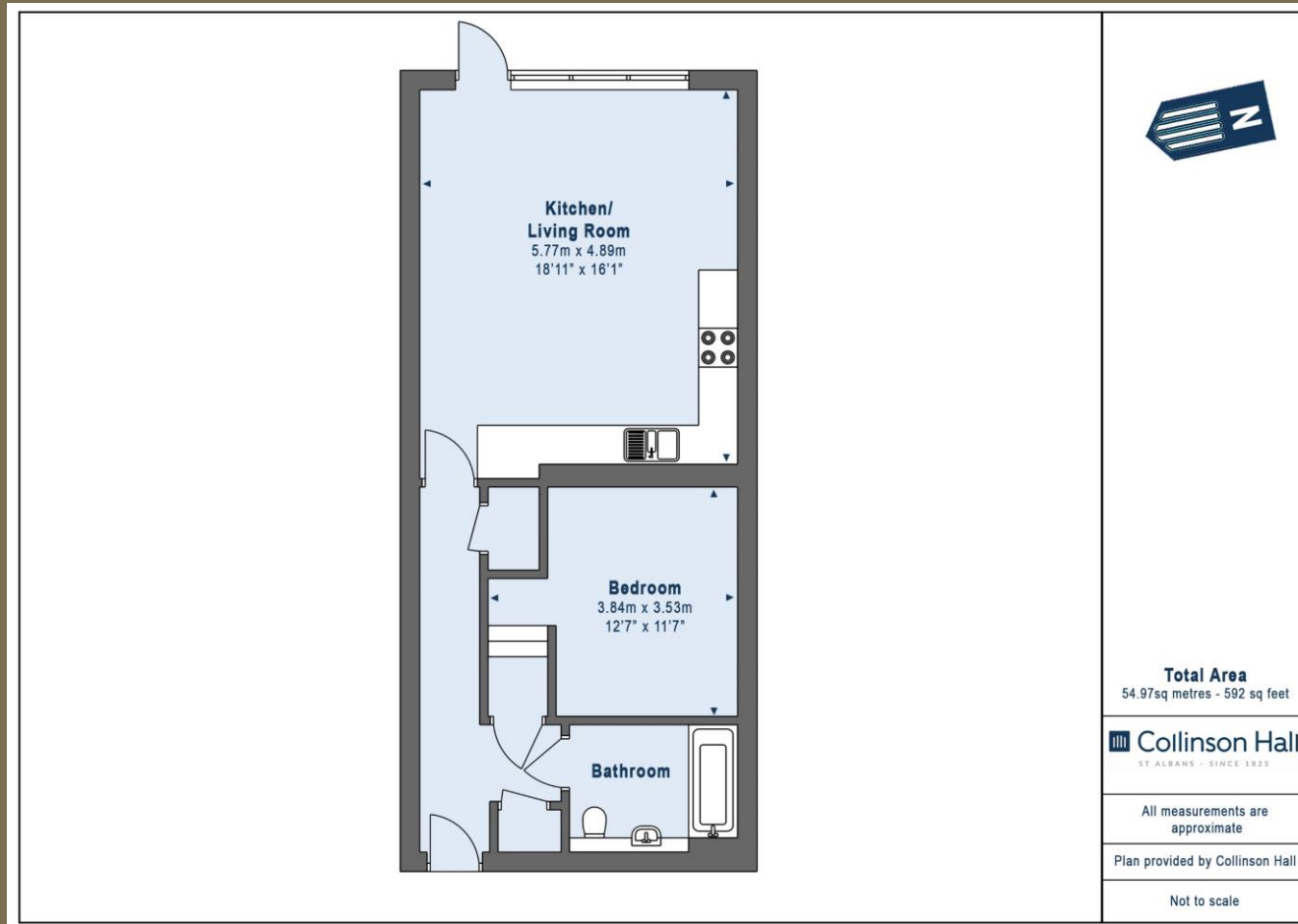
EPC Rating: E

Lettings open day Saturday 3rd December between 12.15-2.15pm by appointment only.

Available from 12th December 2022







PLEASE NOTE

These particulars do not constitute an offer or contract in whole or in part. Please note that these details have been prepared for prospective purchasers as a general guide. We have endeavoured to be accurate in their preparation, but any intending purchaser should not rely on them as statements or representations of fact. In respect of the floor plans, these are for illustrative purposes only and room sizes are approximate and rounded: they are taken between internal wall surfaces and therefore may include cupboards/shelves, etc. No responsibility is taken for any error. Accordingly they should not be relied upon for carpets and furnishings. The services, systems and appliances at the property have not been tested and no guarantee as to their operability or efficiency can be given.



collinsonhall.co.uk

City Centre Office: 9-11 Victoria Street | St Albans | Hertfordshire | AL1 3UB | Telephone: 01727 843222 | Email: stalbansmail@collinsonhall.co.uk