





This spacious three bedroom end of terraced property is situated on a sought after road and is located a short distance from the mainline railway station and a reputable school catchment.

Asking Price: £600,000

This spacious three bedroom end of terrace home is situated on a sought after road and is located a short distance from the mainline railway station and a reputable school catchment.

The property benefits from over 1000 square feet of living space with well-presented accommodation arranged over two levels, comprising a modern kitchen/breakfast room, family bathroom and a 20ft lounge diner with patio doors opening to the enclosed rear garden.

On the first floor there are two double bedrooms & single room all with built in wardrobes and a modern fully tiled shower room.

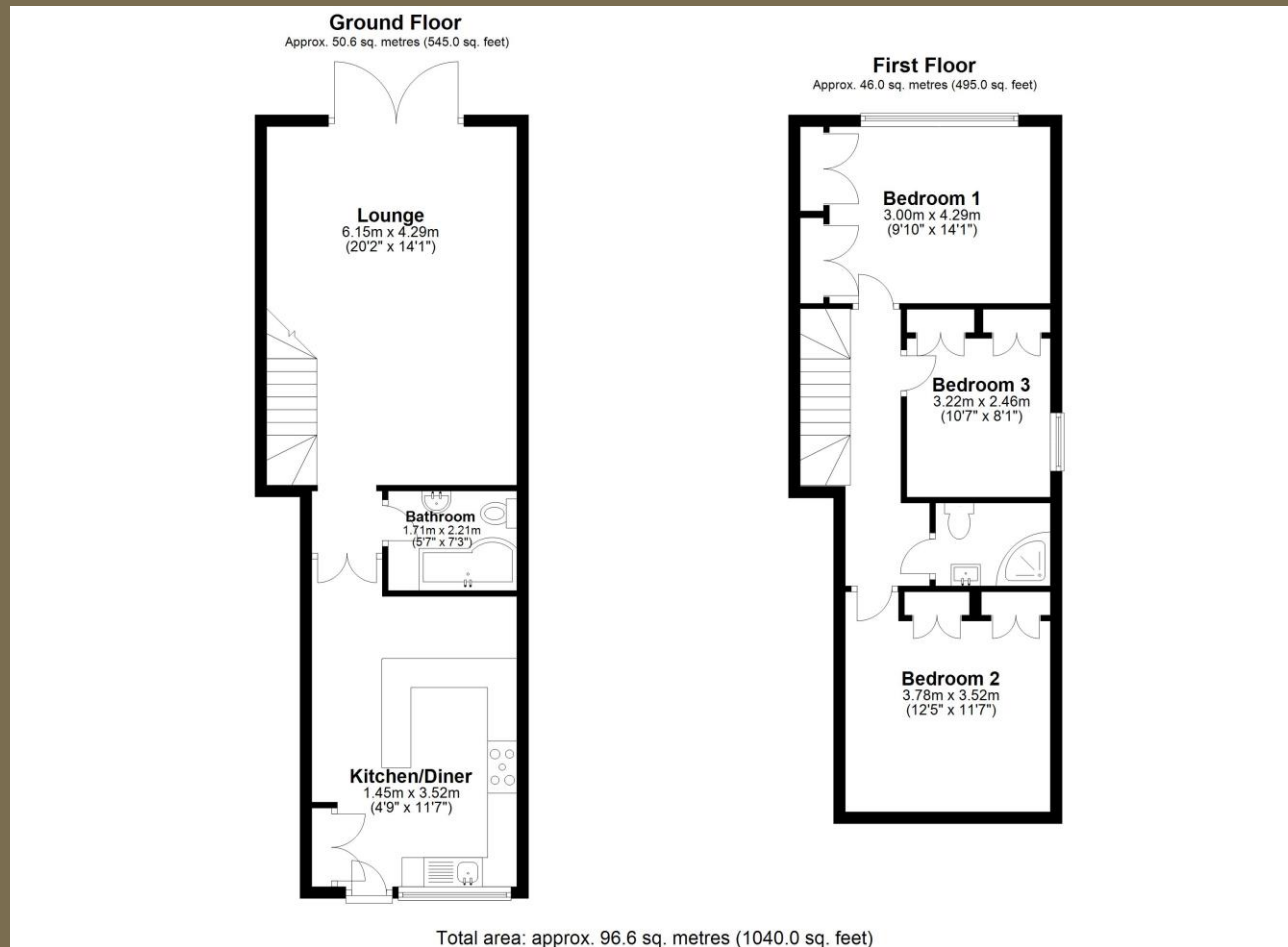
Outside, the paved driveway provides off road parking.











PLEASE NOTE

These particulars do not constitute an offer or contract in whole or in part. Please note that these details have been prepared for prospective purchasers as a general guide. We have endeavoured to be accurate in their preparation, but any intending purchaser should not rely on them as statements or representations of fact. In respect of the floor plans, these are for illustrative purposes only and room sizes are approximate and rounded: they are taken between internal wall surfaces and therefore may include cupboards/shelves, etc. No responsibility is taken for any error. Accordingly they should not be relied upon for carpets and furnishings. The services, systems and appliances at the property have not been tested and no guarantee as to their operability or efficiency can be given.