



An attractive modern semi-detached family home conveniently located for popular schools close to local amenities and major road networks.

£2250 per calendar month

The accommodation includes an entrance hall with oak flooring, a generous living room with doors to the rear garden, a separate dining room, beautifully fitted contemporary kitchen/breakfast room with granite work surfaces, and a cloakroom. To the first floor there is a guest double bedroom with en suite facilities, two further double bedrooms and a family bathroom, and a master suite with fitted wardrobes and a large en suite on the second floor. Outside there is off-street parking and a south-facing rear garden.



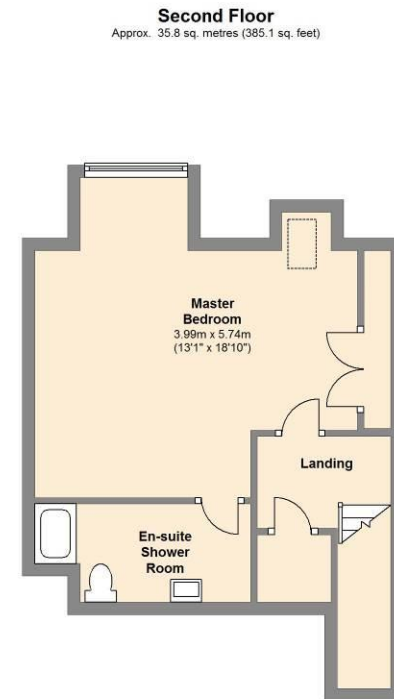
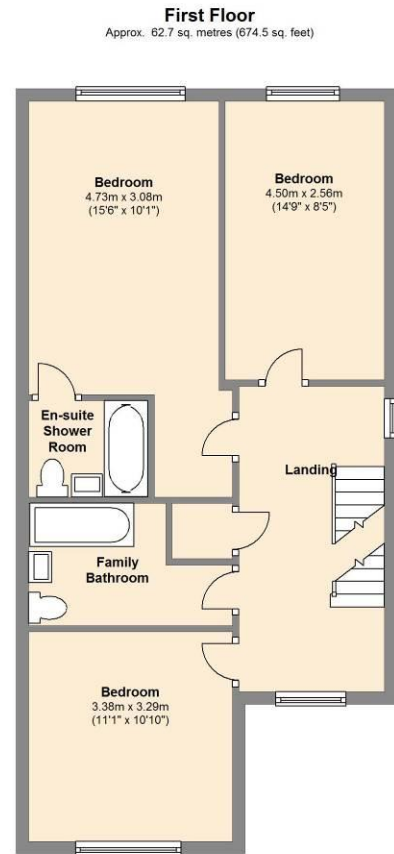
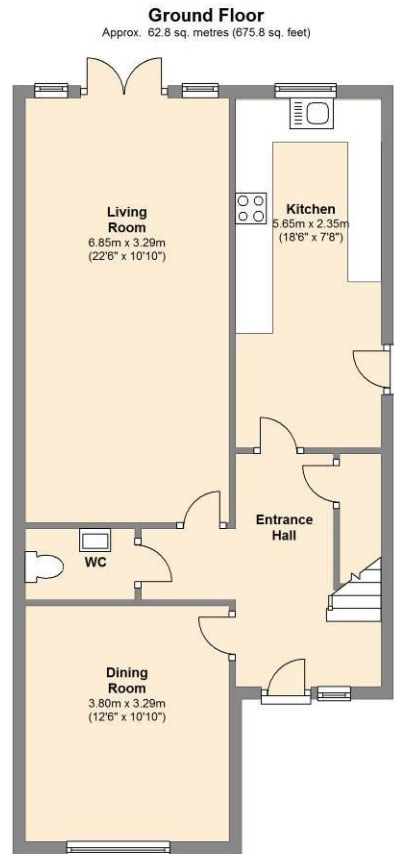
To let unfurnished.

Available Early September.

Collinson
Hall







Total area: approx. 161.2 sq. metres (1735.5 sq. feet)

PLEASE NOTE

These particulars do not constitute an offer or contract in whole or in part. Please note that these details have been prepared for prospective purchasers as a general guide. We have endeavoured to be accurate in their preparation, but any intending purchaser should not rely on them as statements or representations of fact. In respect of the floor plans, these are for illustrative purposes only and room sizes are approximate and rounded: they are taken between internal wall surfaces and therefore may include cupboards/shelves, etc. No responsibility is taken for any error. Accordingly they should not be relied upon for carpets and furnishings. The services, systems and appliances at the property have not been tested and no guarantee as to their operability or efficiency can be given.